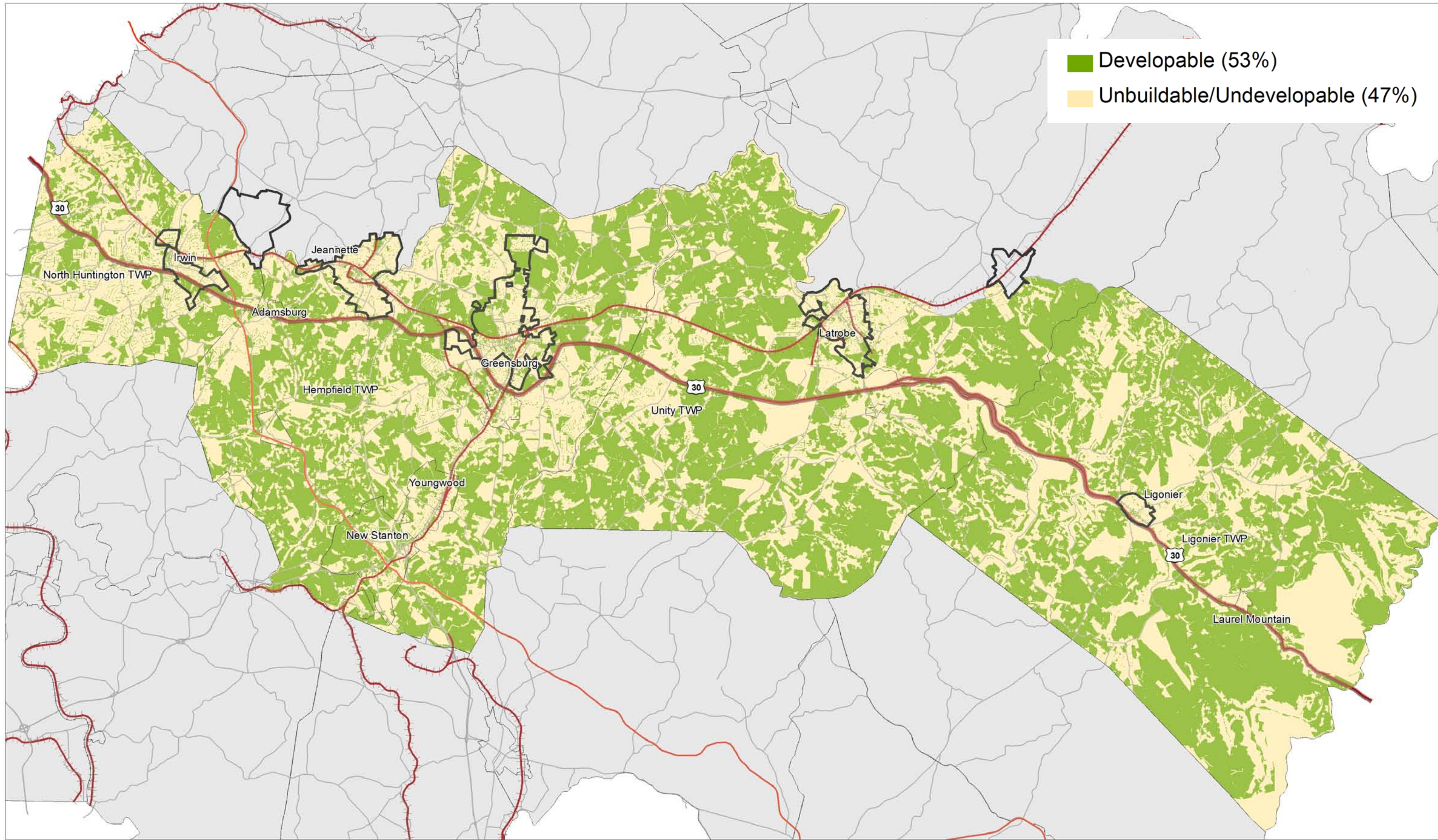




DEVELOPABLE/UNDEVELOPABLE



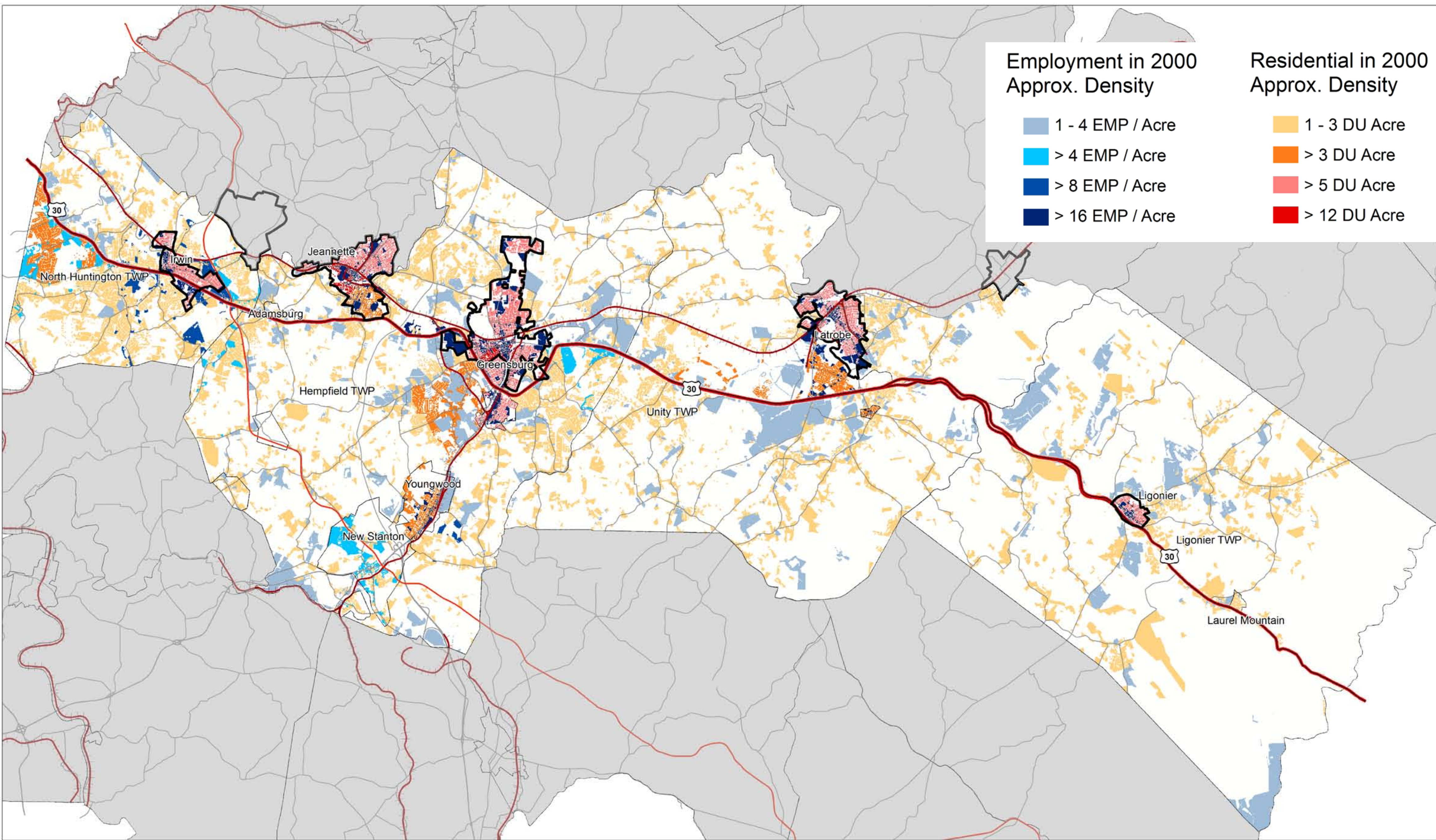
STUDY AREA	2000	2030
Land (acres)	189,338	189,338
Persons	158,662	170,081
Households	64,752	77,820
Jobs	100,854	104,339

Developable Land: 100,810 acres
 Agricultural, redevelopable (commercial/ industrial), or vacant/open land (not built upon and buildable)

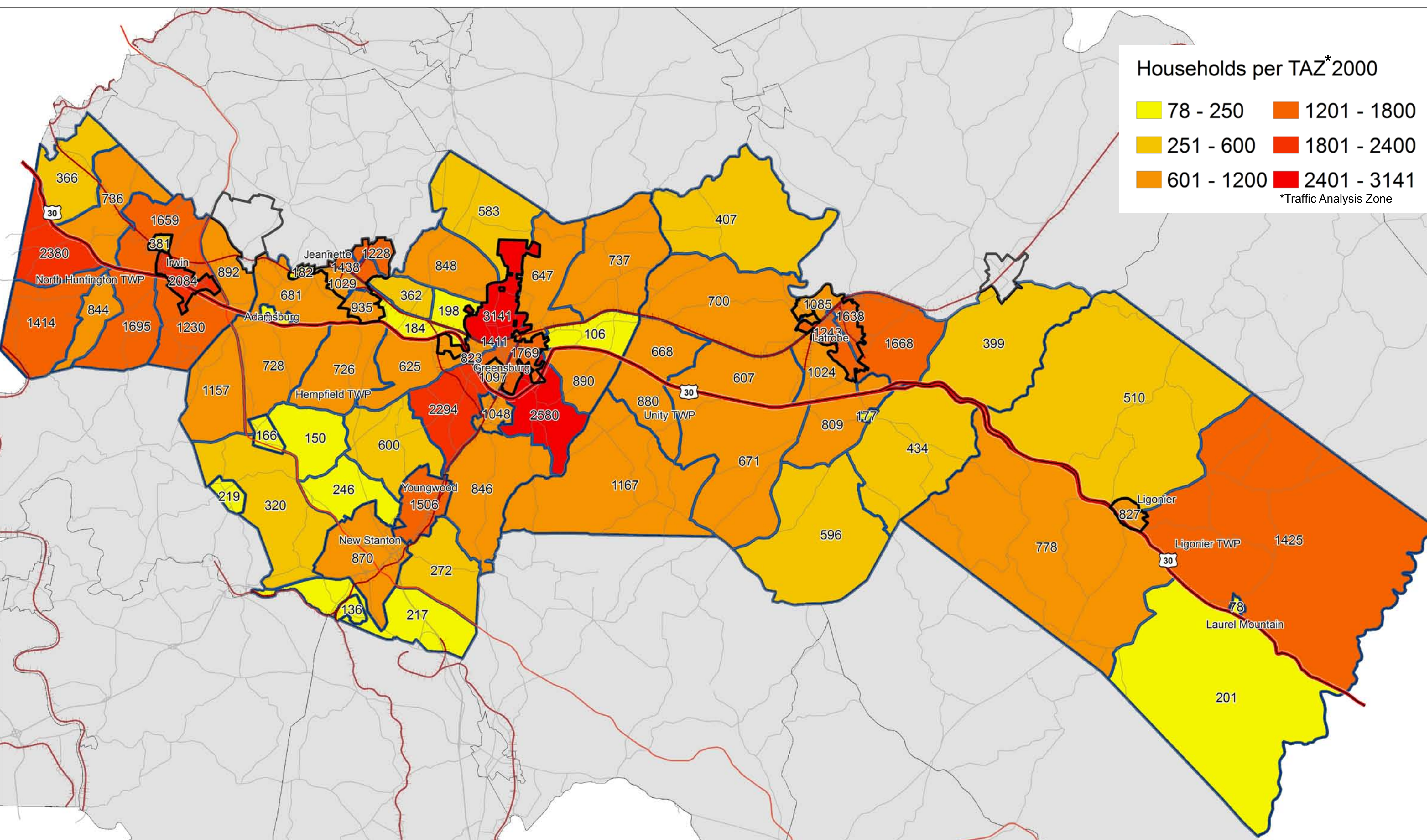
Unbuildable/Undevelopable Land: 88,528 acres
 Unbuildable is presence of steep slopes, wetlands, water, or is a primary road right of way (ROW).

Undevelopable is presence of existing residential neighborhoods, government, or park land

EXISTING HOUSING/JOBS



HOUSEHOLDS BY TAZ (2000)



EMPLOYMENT BY TAZ (2000)

