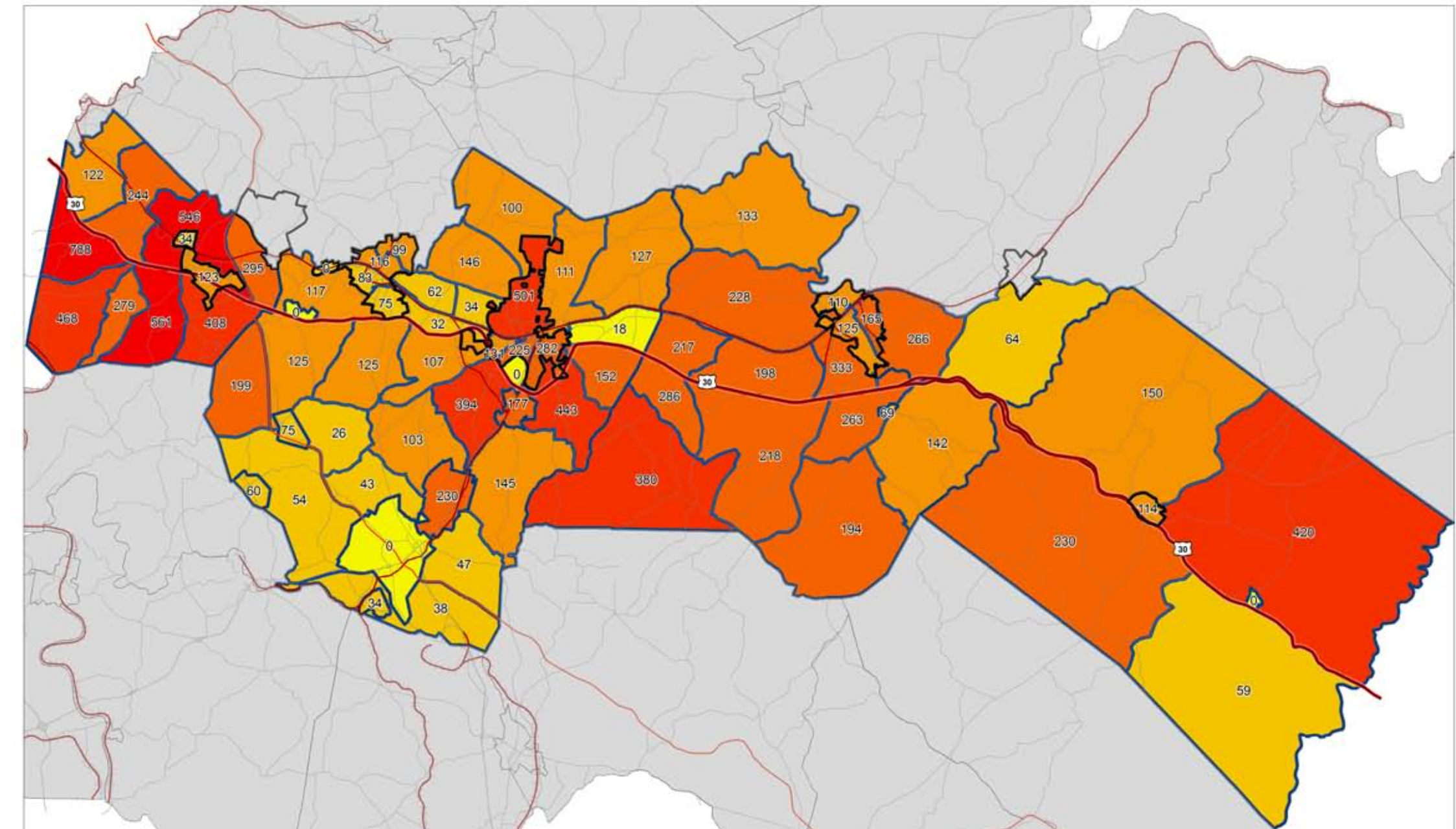


## US Route 30 Corridor Scenarios: Trend



- U.S. Route 30
- Urban MU
- Rural Residential
- PA Turnpike
- Urban MU Optimized
- Employment Institutional
- Railroad
- Urban Residential
- Suburban Employment
- Major Roads
- Suburban Residential
- Existing Urban/Built
- Outside Study Area

Study Area Increase by 2030  
 Number of additional persons 11,419  
 Number of additional households 13,068  
 Number of additional jobs 3,485



**US Route 30 Corridor Trend: Additional Households by 2030**

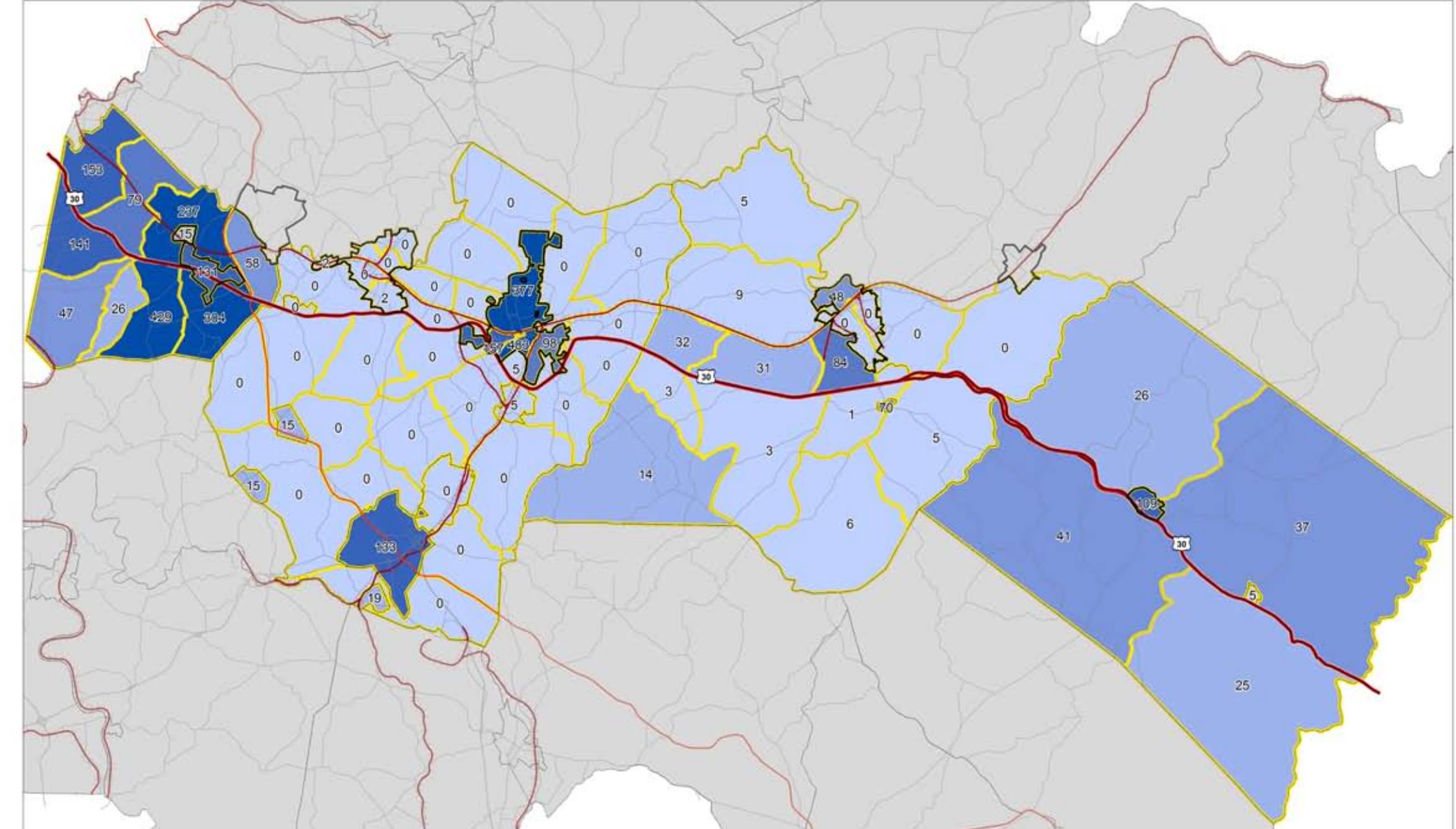
Legend:  
 - U.S. Route 30  
 - PA Turnpike  
 - Railroad  
 - Major Roads  
 - Traffic Analysis Zone (TAZ)

Trend of Incremental Households per TAZ by 2030\*

|          |           |
|----------|-----------|
| 0 - 25   | 151 - 350 |
| 26 - 85  | 351 - 525 |
| 86 - 150 | 526 - 788 |

Study Area  
 Number of persons 2000: 158,662; 2030: 170,081; Increase: 11,419  
 Number of households 2000: 64,752; 2030: 77,820; Increase: 13,068  
 Number of jobs 2000: 100,854; 2030: 104,339; Increase: 3,485

\* Numbers per TAZ have been adjusted in coordination with SPC.



**US Route 30 Corridor Trend: Additional Jobs by 2030**

Legend:  
 - U.S. Route 30  
 - PA Turnpike  
 - Railroad  
 - Major Roads  
 - Traffic Analysis Zone (TAZ)

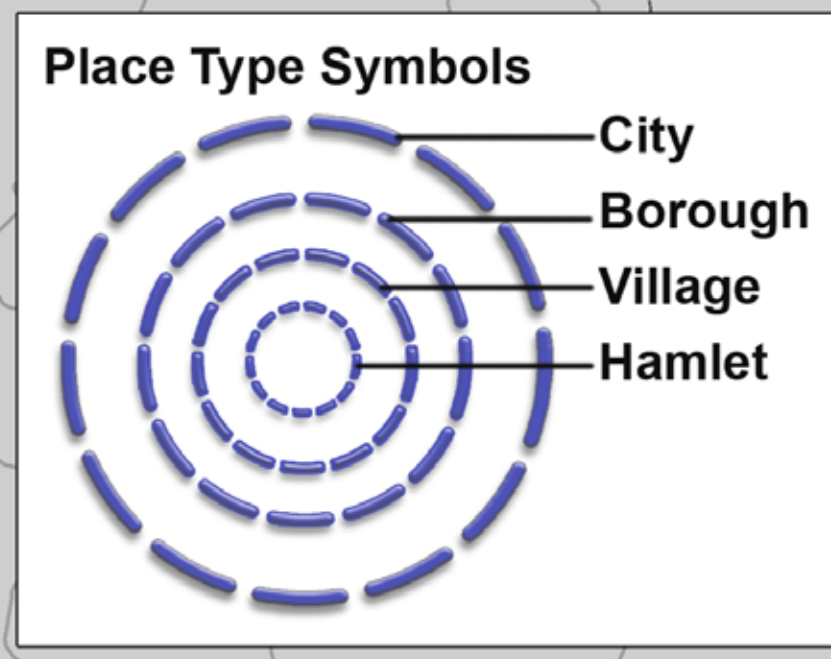
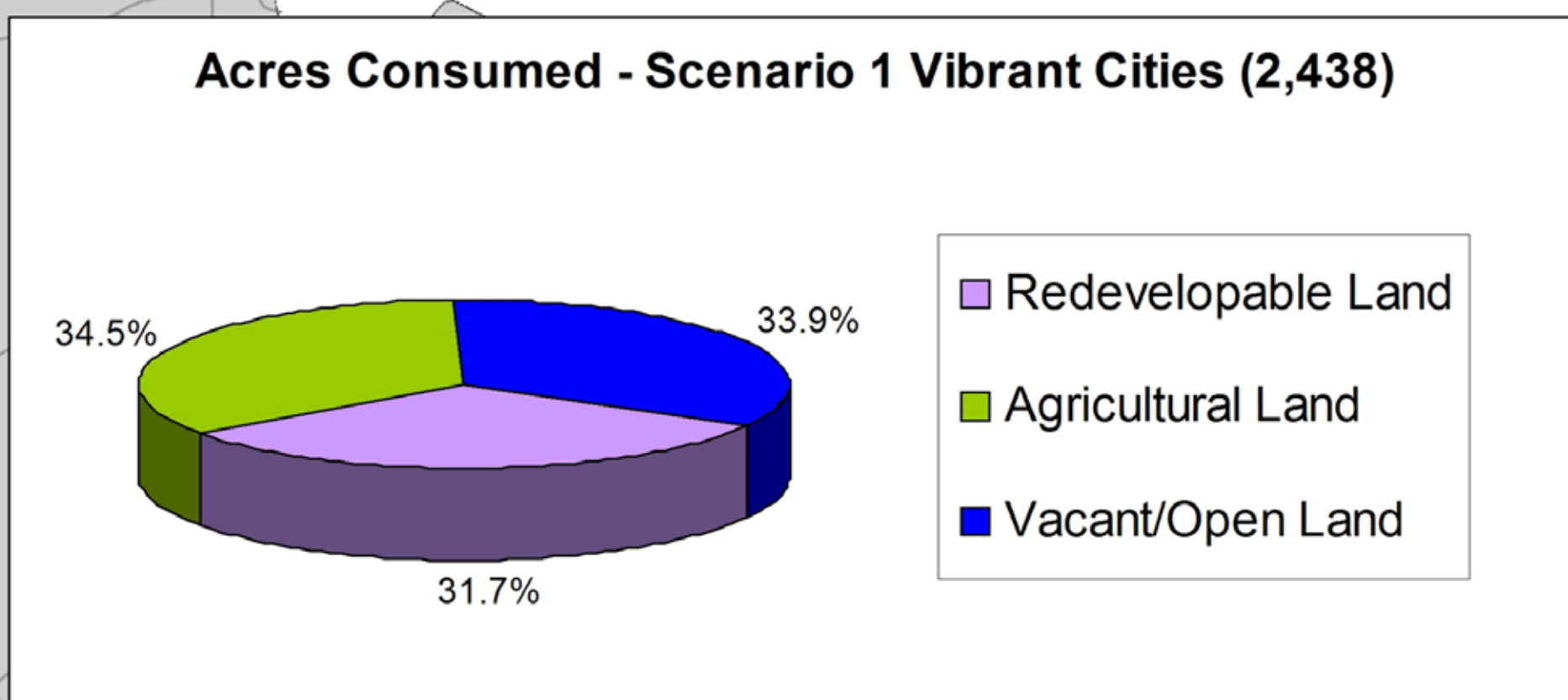
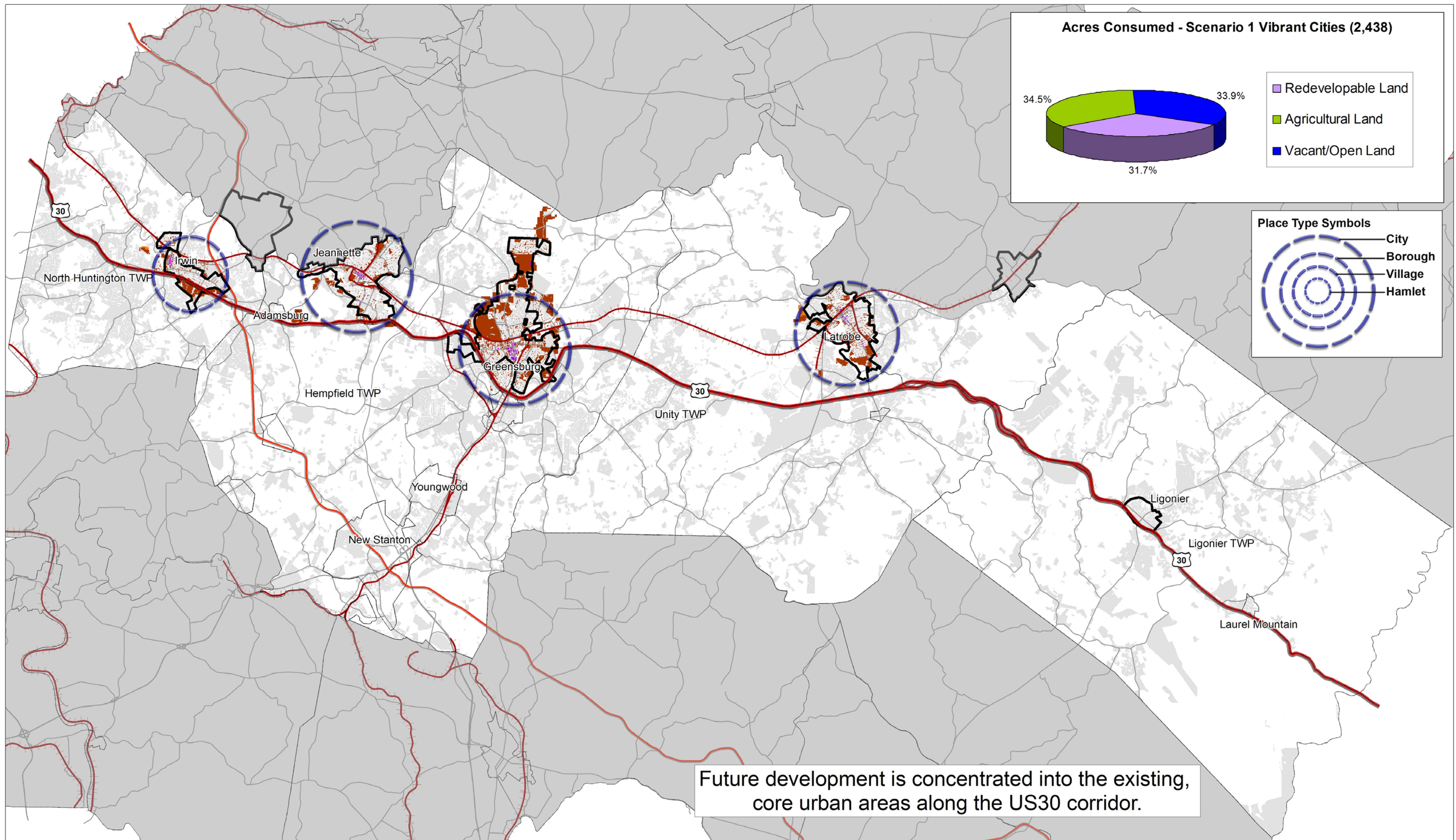
Trend of Incremental Jobs per TAZ by 2030\*

|         |           |
|---------|-----------|
| 0 - 10  | 61 - 100  |
| 11 - 35 | 101 - 230 |
| 36 - 60 | 231 - 483 |

Study Area  
 Number of persons 2000: 158,662; 2030: 170,081; Increase: 11,419  
 Number of households 2000: 64,752; 2030: 77,820; Increase: 13,068  
 Number of jobs 2000: 100,854; 2030: 104,339; Increase: 3,485

\* Numbers per TAZ have been adjusted in coordination with SPC.

| US Route 30 Master Plan: How the Scenarios Compare      |  |  |                |                    |                  |                  |
|---|--|--|----------------|--------------------|------------------|------------------|
|   | Base   | Trend                                    | Urban Centers  | Suburban Centers   | Rural Centers    |                  |
| <b>Land Consumed</b>                                    |  |  |                |                    |                  |                  |
| Total acres developed                                   | 46,614   | 59,702                                   | 49,052         | 49,592             | 57,288           |                  |
| Total additional acres developed                        | ---  | 13,088                                   | 2,438          | 2,978              | 10,671           |                  |
| Percent of redevelopable land consumed                  | ---  | 28%                                      | 5%             | 6%                 | 23%              |                  |
| Percent increase  | ---  | 4%                                       | 3%             | 1%                 | 2%               |                  |
| Percent of agricultural/open land consumed              | ---  | 15%                                      | 2%             | 3%                 | 12%              |                  |
| <b>Transportation</b>                                   |  |  |                |                    |                  |                  |
|   |  | Percent Change Base Year - Forecast Year |                |                    |                  |                  |
| Daily traffic volume                                    | 5,700,000  | 12%                                      | 12%            | 14%                | 16%              |                  |
| Daily vehicle miles traveled                            | 3,900,000  | 14%                                      | 13%            | 16%                | 20%              |                  |
| Daily vehicle hours traveled                            | 105,000  | 12%                                      | 11%            | 13%                | 17%              |                  |
| Corridor level of service                               | ---  | -1%                                      | 4%             | 0%                 | -6%              |                  |
| Daily minutes of vehicle travel per person              | 40   | -5%                                      | 3%             | 6%                 | 9%               |                  |
| Travel speed  | 35   | 2.0%                                     | 1.8%           | 2.4%               | 2.3%             |                  |
| Annual gallons of gasoline consumed                     | 72,000,000   | 14%                                      | 13%            | 16%                | 20%              |                  |
| Annual per capita dollars spent on gasoline****         | \$1,120  | 7%                                       | 5%             | 8%                 | 12%              |                  |
| <b>Land Use/Urban Form</b>                              |  |  |                |                    |                  |                  |
|   |  | Percent Change Base Year - Forecast Year |                |                    |                  |                  |
| New households in mixed-use, walkable communities       | ---  | 14%                                      | 99%            | 58%                | 30%              |                  |
| New jobs in mixed-use, walkable communities             | ---  | 32%                                      | 100%           | 71%                | 33%              |                  |
| New households in existing urban centers*****           | ---  | 17%                                      | 61%            | 0%                 | 0%               |                  |
| New jobs in existing urban centers*****                 | ---  | 40%                                      | 70%            | 0%                 | 0%               |                  |
| New households in existing water and sanitary districts | ---  | 36%                                      | 71%            | 20%                | 6%               |                  |
| New jobs in existing water and sanitary districts       | ---  | 66%                                      | 78%            | 36%                | 20%              |                  |
| <b>Population, Employment, and Land Area</b>            |  |  |                |                    |                  |                  |
|   |  | Land Area (all scenarios)                | Base Year 2000 | Forecast Year 2030 | Numeric Increase | Percent Increase |
| Number of persons                                       | 158,662  |  | 170,081        | 11,419             | 7%               |                  |
| Number of households                                    | 64,752   |  | 77,820         | 13,068             | 20%              |                  |
| Number of jobs  | 100,854  |  | 104,339        | 3,485              | 3%               |                  |
| Total acres   | 189,338  |  |                |                    |                  |                  |
| Total unbuildable acres*                                | 85,538   |  |                |                    |                  |                  |
| Total buildable acres**                                 | 100,810  |  |                |                    |                  |                  |
| Buildable redevelopable acres***                        | 9,046  |  |                |                    |                  |                  |
| Buildable agricultural or vacant/open acres             | 85,593   |  |                |                    |                  |                  |
| <b>Notes</b>  | * Unbuildable or undevelopable land includes steep slopes, wetlands, water, primary road right-of-way, and existing residential areas<br>** Buildable land includes redevelopable areas, vacant/open space, and agricultural land<br>*** Redevelopable land includes commercial and industrial areas (not residential areas)<br>**** Assumes price of \$2.50 per gallon in current dollars for all scenarios<br>***** Existing urban centers include Jeannette, Irwin, Greensburg, and Latrobe |  |                |                    |                  |                  |



## US Route 30 Corridor Scenario 1: Urban Centers

0 0.5 1 2 3 4 5 Miles

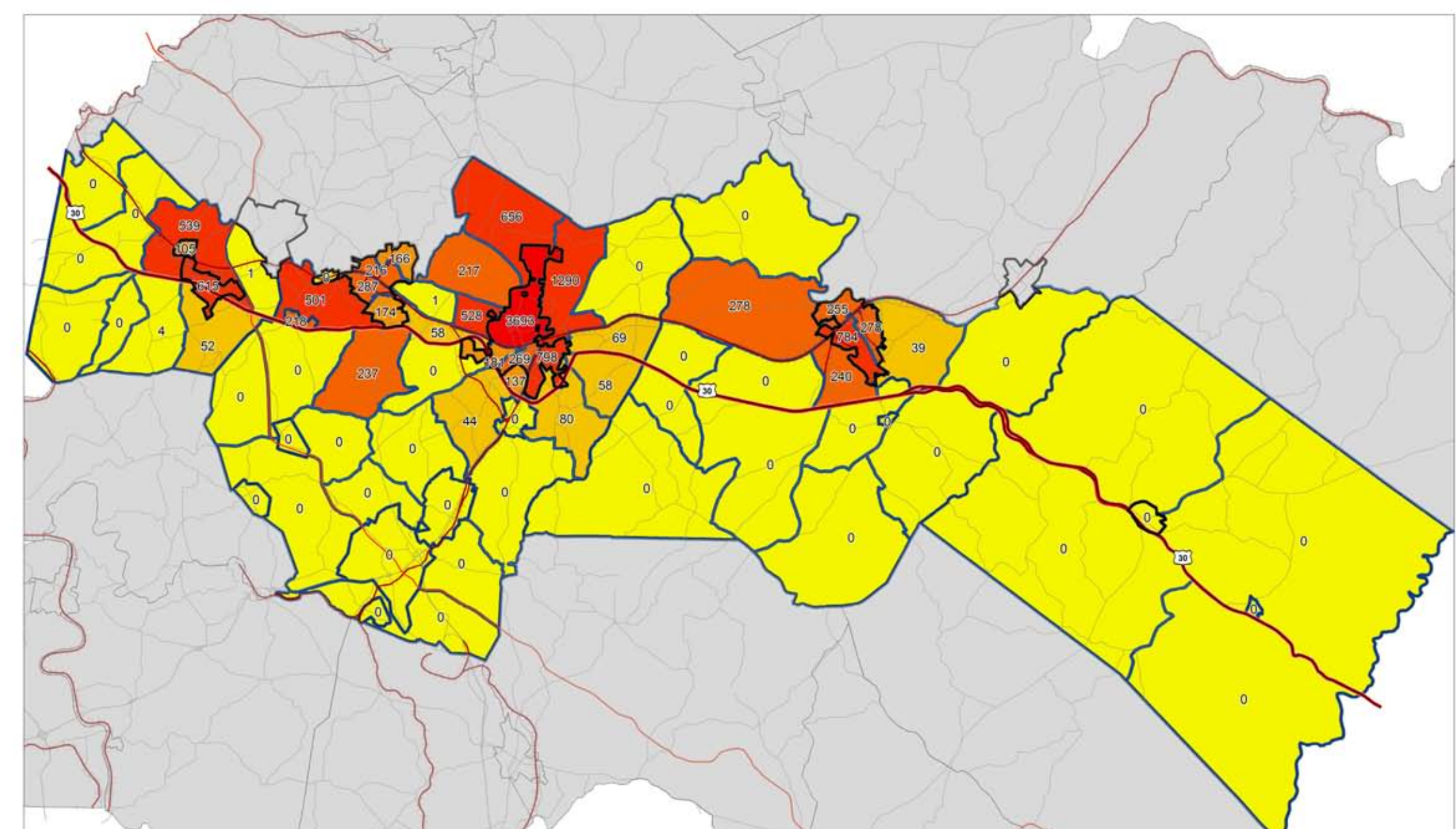
- U.S. Route 30
- PA Turnpike
- Railroad
- Major Roads
- Existing Urban/Built
- Outside Study Area
- Urban Mixed Use
- Urban Mixed Use Optimized
- Urban Residential
- Suburban Residential

Study Area Increase by 2030

Number of additional persons 11,419

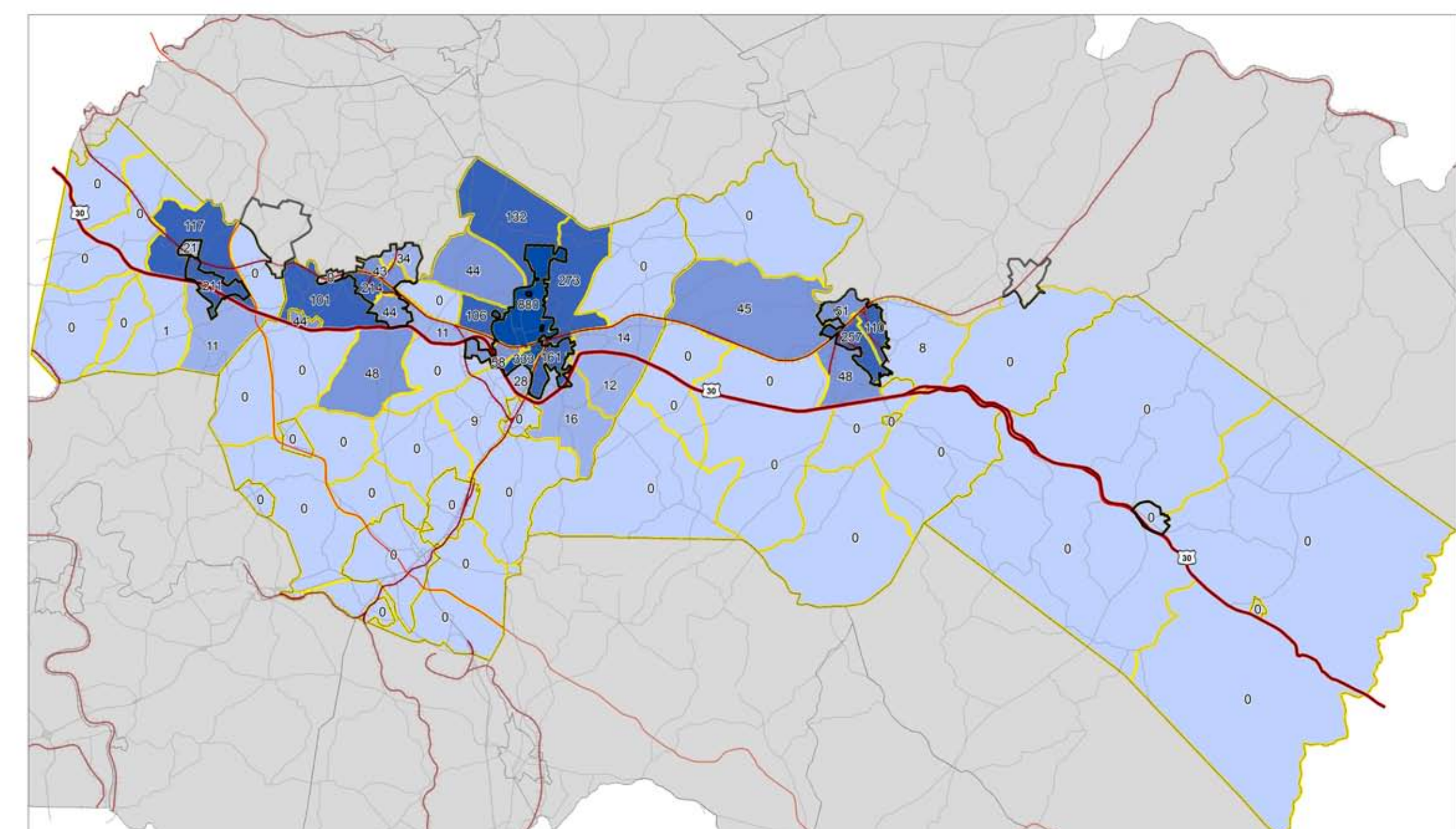
Number of additional households 13,068

Number of additional jobs 3,485



### US Route 30 Corridor 'Urban Centers' Additional Households by 2030

| Study Area           | 2000    | 2030    | Increase |
|----------------------|---------|---------|----------|
| Number of persons    | 158,662 | 170,081 | 11,419   |
| Number of households | 64,752  | 77,820  | 13,068   |
| Number of jobs       | 100,854 | 104,339 | 3,485    |



### US Route 30 Corridor 'Urban Centers' Additional Jobs by 2030

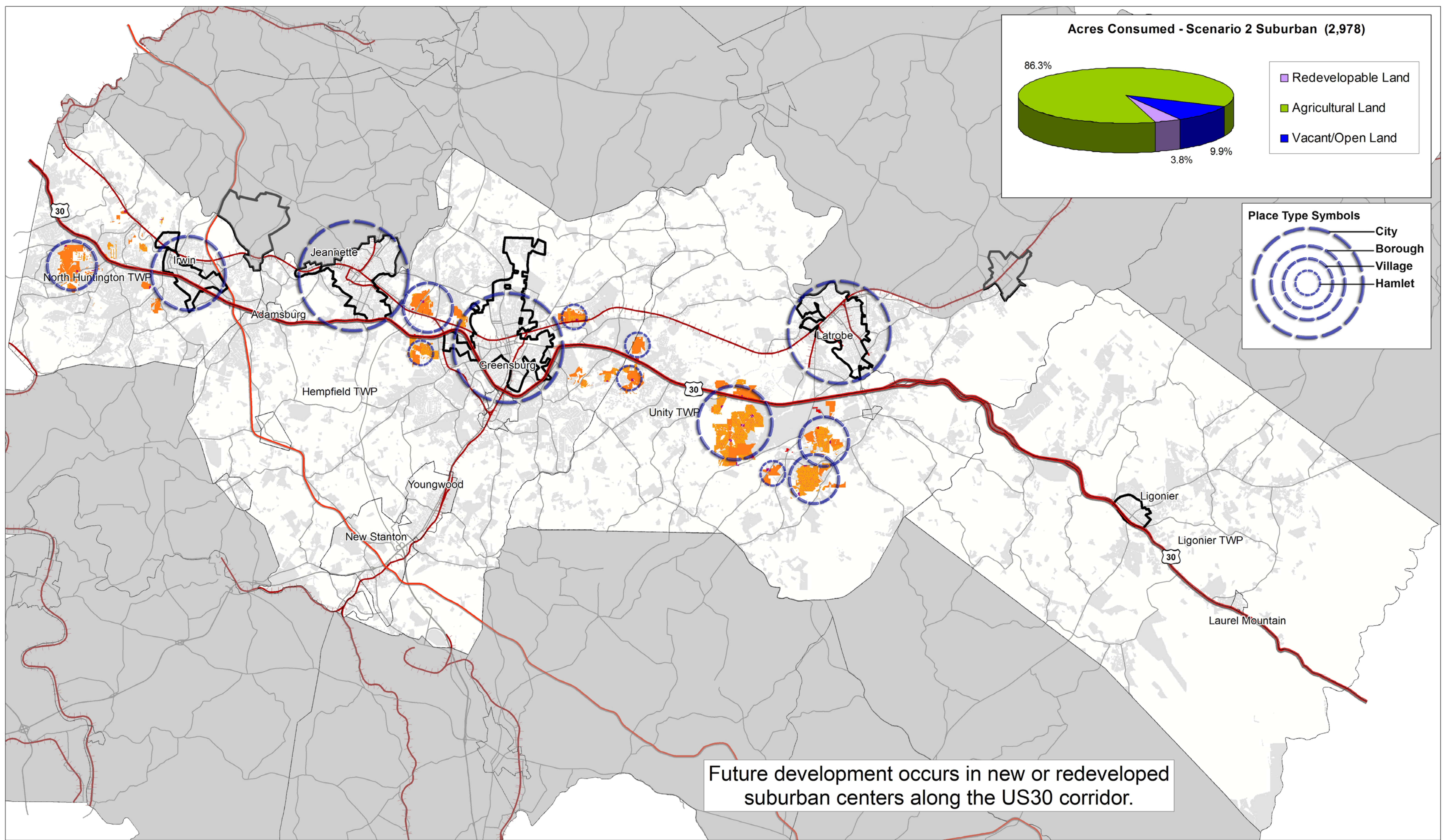
| Study Area           | 2000    | 2030    | Increase |
|----------------------|---------|---------|----------|
| Number of persons    | 158,662 | 170,081 | 11,419   |
| Number of households | 64,752  | 77,820  | 13,068   |
| Number of jobs       | 100,854 | 104,339 | 3,485    |

### US Route 30 Master Plan: How the Scenarios Compare

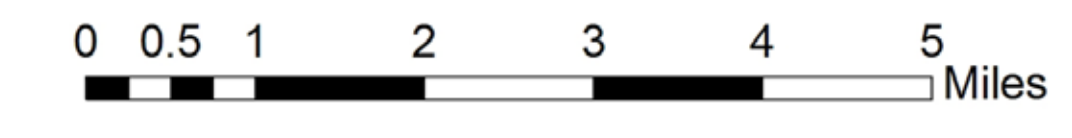
|   | Base       | Trend   | Urban Centers | Suburban Centers | Rural Centers |
|---|------------|---------|---------------|------------------|---------------|
| <b>Land Consumed</b>                                    |            |         |               |                  |               |
| Total acres developed                                   | 46,614     | 59,702  | 49,052        | 49,592           | 57,285        |
| Total additional acres developed                        | ---        | 13,088  | 2,438         | 2,978            | 10,611        |
| Percent increase  | ---        | 28%     | 5%            | 6%               | 23%           |
| Percent of redevelopable land consumed                  | ---        | 4%      | 9%            | 1%               | 2%            |
| Percent of agricultural/open land consumed              | ---        | 15%     | 2%            | 3%               | 12%           |
| <b>Transportation</b>                                   |            |         |               |                  |               |
| Daily traffic volume                                    | 5,700,000  | 12%     | 12%           | 14%              | 16%           |
| Daily vehicle miles traveled                            | 3,900,000  | 14%     | 13%           | 16%              | 20%           |
| Daily vehicle hours traveled                            | 105,000    | 12%     | 11%           | 13%              | 17%           |
| Comridor level of service                               | ---        | -1%     | 4%            | 0%               | -6%           |
| Daily minutes of vehicle travel per person              | 40         | 5%      | 3%            | 6%               | 9%            |
| Travel speed  | 56         | 2.0%    | 1.8%          | 2.4%             | 2.3%          |
| Annual gallons of gasoline consumed                     | 72,000,000 | 14%     | 13%           | 16%              | 20%           |
| Annual per capita dollars spent on gasoline ****        | \$1,120    | 7%      | 5%            | 8%               | 12%           |
| <b>Land Use/Urban Form</b>                              |            |         |               |                  |               |
| New households in mixed-use, walkable communities       | ---        | 14%     | 99%           | 58%              | 30%           |
| New jobs in mixed-use, walkable communities             | ---        | 32%     | 100%          | 71%              | 33%           |
| New households in existing urban centers ****           | ---        | 17%     | 61%           | 0%               | 0%            |
| New jobs in existing urban centers ****                 | ---        | 40%     | 70%           | 0%               | 0%            |
| New households in existing water and sanitary districts | ---        | 36%     | 71%           | 20%              | 6%            |
| New jobs in existing water and sanitary districts       | ---        | 65%     | 78%           | 36%              | 20%           |
| <b>Population, Employment, and Land Area</b>            |            |         |               |                  |               |
| Land Area (all scenarios)                               |            |         |               |                  |               |
| Number of persons                                       | 158,662    | 170,081 | 11,419        | 7%               |               |
| Number of households                                    | 64,752     | 77,820  | 13,068        | 20%              |               |
| Number of jobs  | 100,854    | 104,339 | 3,485         | 3%               |               |
| Total acres   | 189,338    |         |               |                  |               |
| Total unbuildable acres *                               | 88,528     |         |               |                  |               |
| Total buildable acres **                                | 100,810    |         |               |                  |               |
| Buildable redevelopable acres ***                       | 9,046      |         |               |                  |               |
| Buildable agricultural or vacant/open acres             | 85,533     |         |               |                  |               |

**Notes**

- \* Unbuildable or undevelopable land includes steep slopes, wetlands, water, primary road right-of-way, and existing residential areas
- \*\* Buildable land includes redevelopable areas, vacant/open space, and agricultural land
- \*\*\* Redevelopable land includes commercial and industrial areas (not residential areas)
- \*\*\*\* Assumes price of \$2.50 per gallon in current dollars for all scenarios
- \*\*\*\*\* Existing urban centers include Jeannette, Irwin, Greensburg, and Latrobe

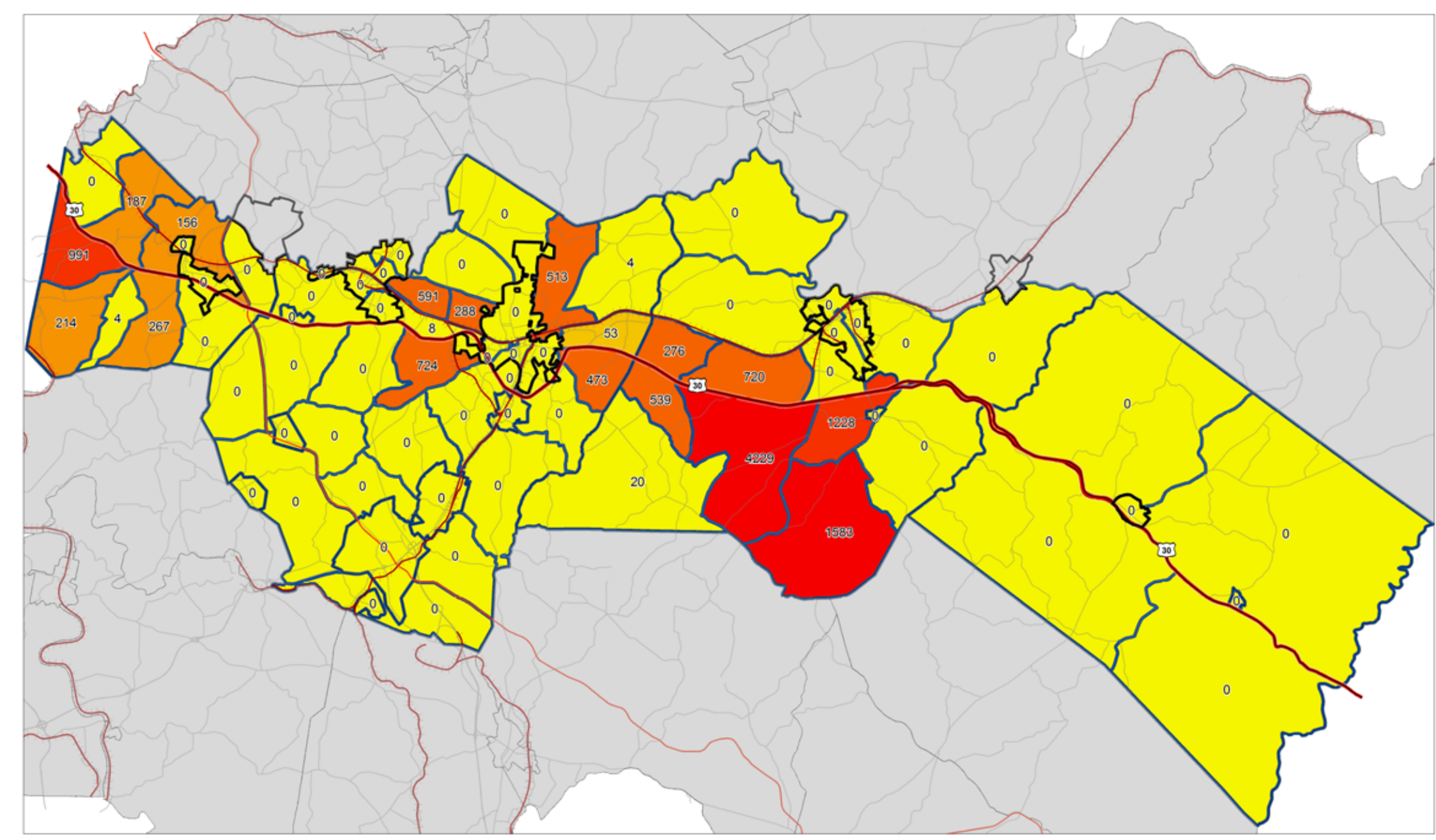


## US Route 30 Corridor Scenario 2: Suburban Centers

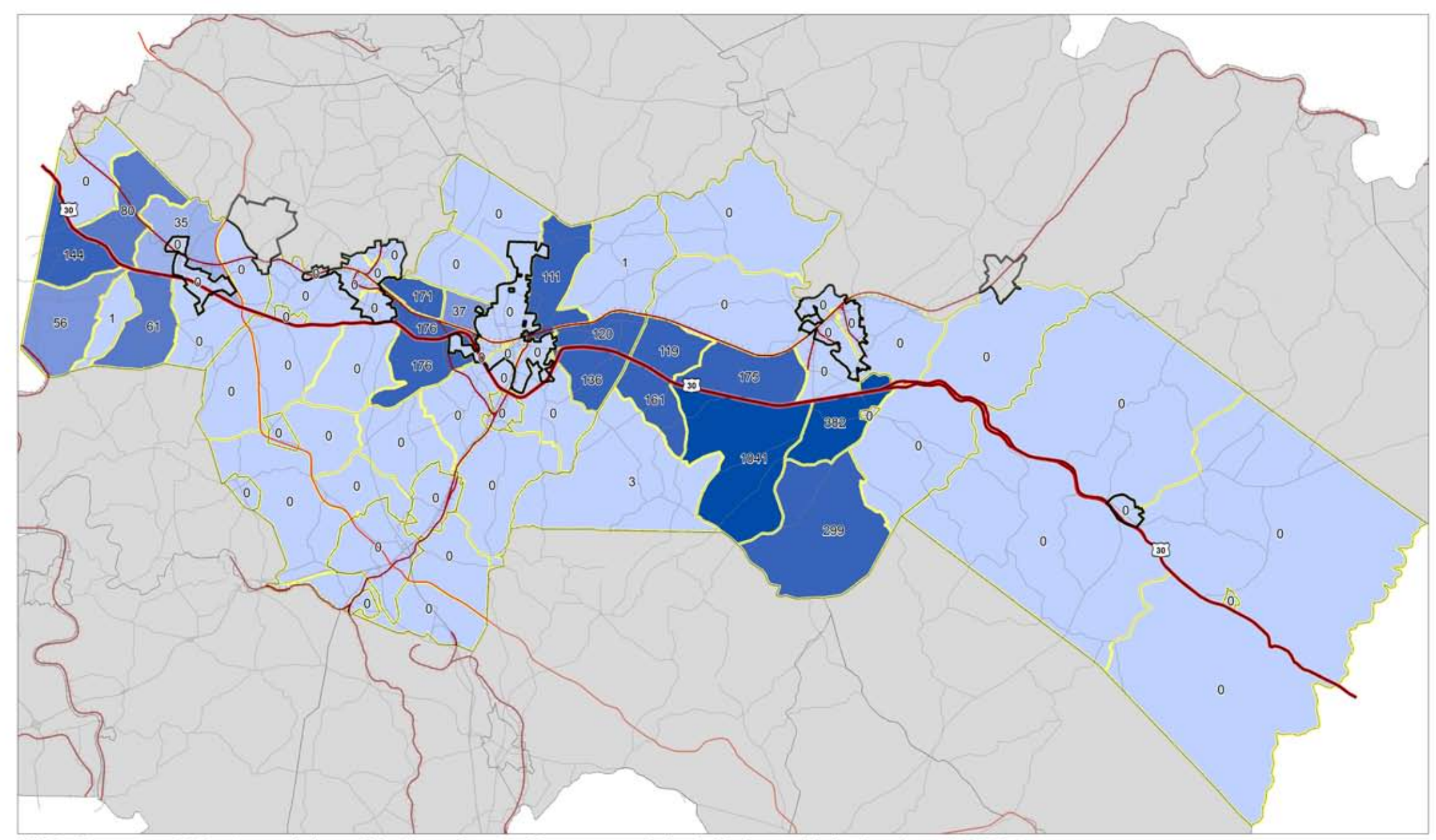


- U.S. Route 30
- PA Turnpike
- Railroad
- Major Roads
- Existing Urban/Built
- Outside Study Area
- Sub Mixed Use Optimized
- Suburban Retail
- Suburban Retail Optimized
- Suburban Office
- Suburban Residential
- Suburban Residential Optimized

| Study Area                      | Increase by 2030 |
|---------------------------------|------------------|
| Number of additional persons    | 11,419           |
| Number of additional households | 13,068           |
| Number of additional jobs       | 3,485            |



| Suburban Centers Scenario Incremental Households per TAZ by 2030 | Study Area           | 2000    | 2030    | Increase |
|--|----------------------|---------|---------|----------|
| 0 - 25   | Number of persons    | 158,662 | 170,081 | 11,419   |
| 26 - 85  | Number of households | 64,752  | 77,820  | 13,068   |
| 86 - 275   | Number of jobs       | 100,854 | 104,339 | 3,485    |

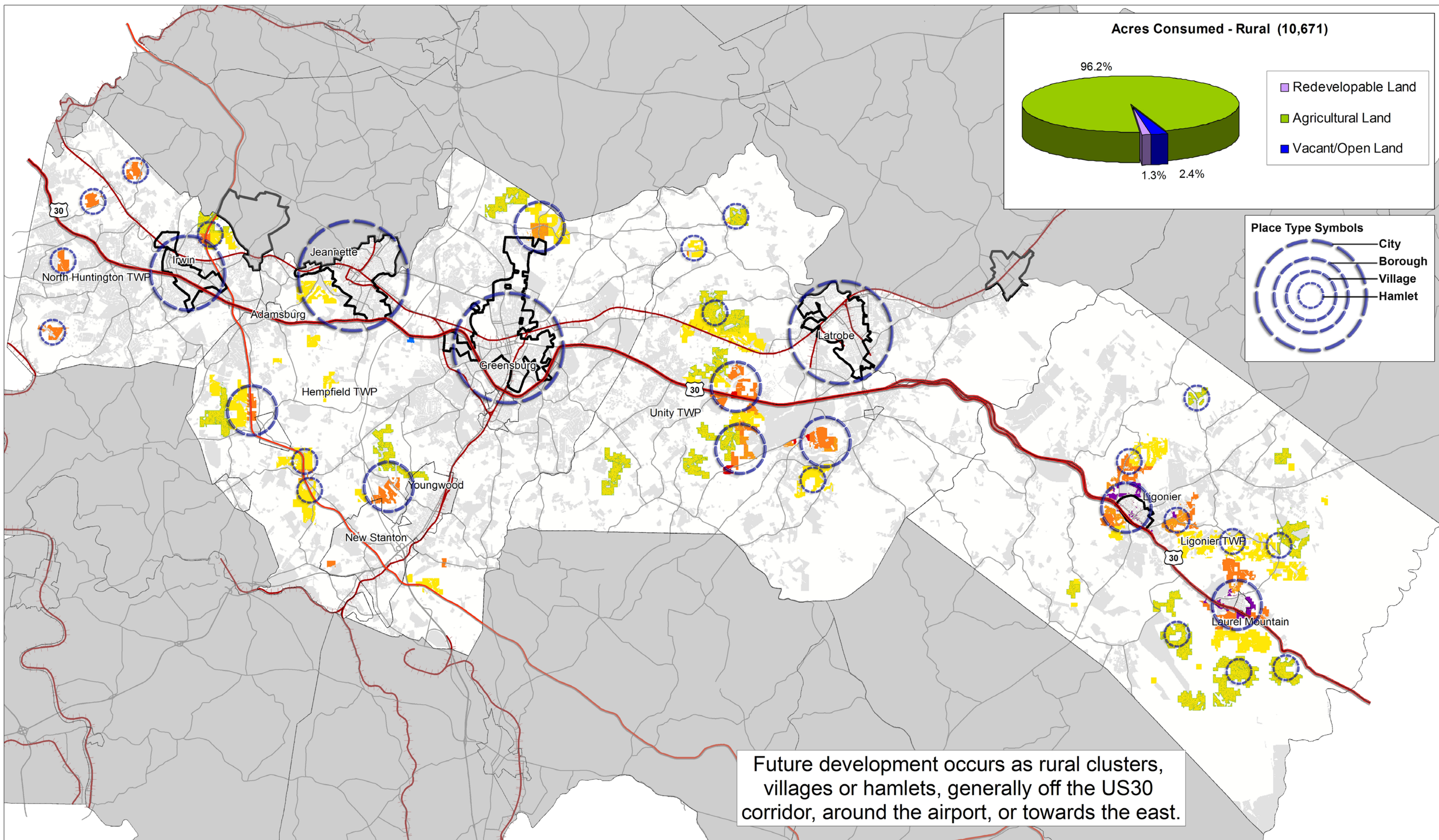


| Suburban Centers Scenario Incremental Jobs per TAZ by 2030 | Study Area           | 2000    | 2030    | Increase |
|--|----------------------|---------|---------|----------|
| 0 - 10   | Number of persons    | 158,662 | 170,081 | 11,419   |
| 11 - 35  | Number of households | 64,752  | 77,820  | 13,068   |
| 36 - 60  | Number of jobs       | 100,854 | 104,339 | 3,485    |

| US Route 30 Master Plan: How the Scenarios Compare      |            |         |               |                  |               |
|---|------------|---------|---------------|------------------|---------------|
|   | Base       | Trend   | Urban Centers | Suburban Centers | Rural Centers |
| <b>Land Consumed</b>                                    |            |         |               |                  |               |
| Total acres developed                                   | 46,614     | 59,702  | 49,052        | 49,592           | 57,285        |
| Total additional acres developed                        | ---        | 13,088  | 2,435         | 2,978            | 10,671        |
| Percent increase  | ---        | 28%     | 5%            | 6%               | 23%           |
| Percent of redevelopable land consumed                  | ---        | 4%      | 9%            | 1%               | 2%            |
| Percent of agricultural/open land consumed              | ---        | 15%     | 2%            | 3%               | 12%           |
| <b>Transportation</b>                                   |            |         |               |                  |               |
| Daily traffic volume                                    | 5,700,000  | 12%     | 12%           | 14%              | 16%           |
| Daily vehicle miles traveled                            | 3,900,000  | 14%     | 13%           | 16%              | 20%           |
| Daily vehicle hours traveled                            | 105,000    | 12%     | 11%           | 13%              | 17%           |
| Commod level of service                                 | ---        | -1%     | 4%            | 0%               | -6%           |
| Daily minutes of vehicle travel per person              | 40         | 5%      | 3%            | 6%               | 9%            |
| Travel speed  | 56         | 2.0%    | 1.8%          | 2.4%             | 2.3%          |
| Annual gallons of gasoline consumed                     | 72,000,000 | 14%     | 13%           | 16%              | 20%           |
| Annual per capita dollars spent on gasoline ****        | \$1,120    | 7%      | 5%            | 8%               | 12%           |
| <b>Land Use/Urban Form</b>                              |            |         |               |                  |               |
| New households in mixed-use, walkable communities       | ---        | 14%     | 9%            | 5%               | 30%           |
| New jobs in mixed-use, walkable communities             | ---        | 32%     | 100%          | 71%              | 33%           |
| New households in existing urban centers ****           | ---        | 17%     | 61%           | 0%               | 0%            |
| New jobs in existing urban centers ****                 | ---        | 40%     | 70%           | 0%               | 0%            |
| New households in existing water and sanitary districts | ---        | 36%     | 71%           | 20%              | 6%            |
| New jobs in existing water and sanitary districts       | ---        | 65%     | 78%           | 36%              | 20%           |
| <b>Population, Employment, and Land Area</b>            |            |         |               |                  |               |
| Land Area (all scenarios)                               |            |         |               |                  |               |
| Number of persons                                       | 158,662    | 170,081 | 170,081       | 170,081          | 170,081       |
| Number of households                                    | 64,752     | 77,820  | 77,820        | 77,820           | 77,820        |
| Number of jobs  | 100,854    | 104,339 | 104,339       | 104,339          | 104,339       |
| Total acres   | 189,338    |         |               |                  |               |
| Total unbuildable acres *                               | 88,528     |         |               |                  |               |
| Total buildable acres **                                | 100,810    |         |               |                  |               |
| Buildable redevelopable acres ***                       | 9,046      |         |               |                  |               |
| Buildable agricultural or vacant/open acres             | 85,533     |         |               |                  |               |

**Notes**

- \* Unbuildable or undevelopable land includes steep slopes, wetlands, water, primary road right-of-way, and existing residential areas
- \*\* Buildable land includes redevelopable areas, vacant/open space, and agricultural land
- \*\*\* Redevelopable land includes commercial and industrial areas (not residential areas)
- \*\*\*\* Assumes price of \$2.50 per gallon in current dollars for all scenarios
- \*\*\*\*\* Existing urban centers include Jeannette, Irwin, Greensburg, and Latrobe



### US Route 30 Corridor Scenario 3: Rural Centers

0 0.5 1 2 3 4 5 Miles

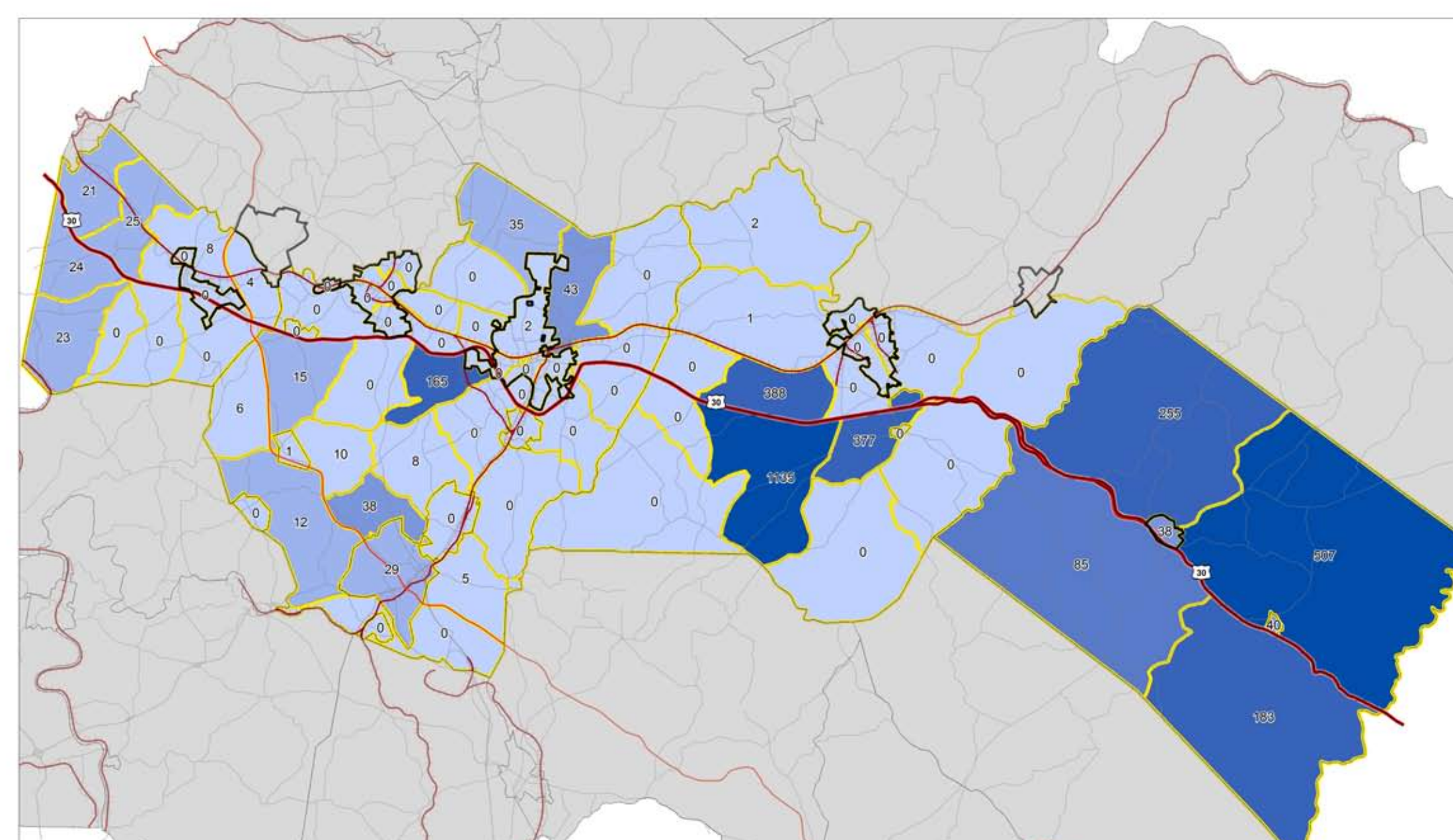
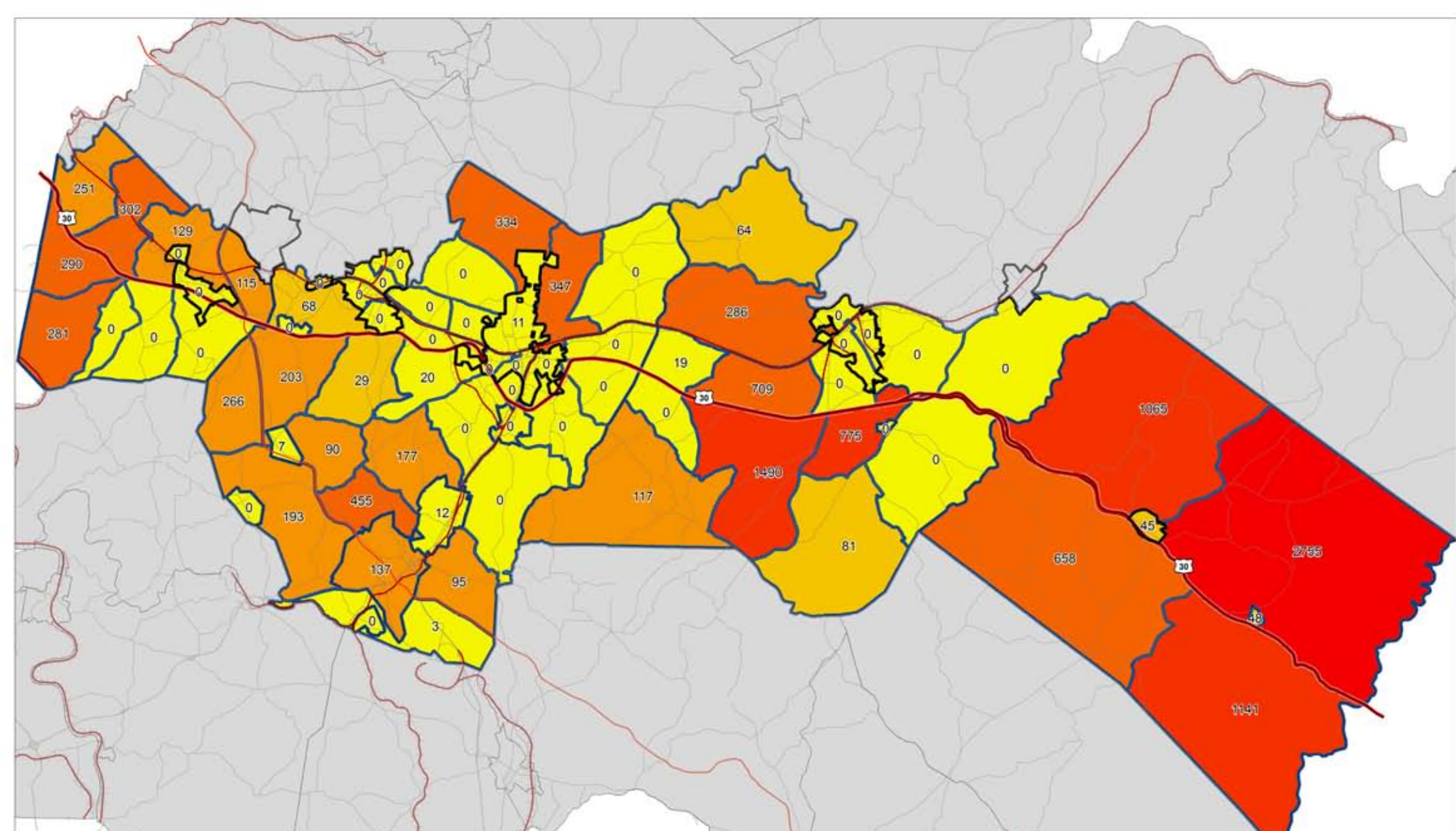
- U.S. Route 30
- PA Turnpike
- Railroad
- Major Roads
- Existing Urban/Built
- Outside Study Area
- Sub Mixed Use Optimized
- Suburban Retail
- Suburban Retail Optimized
- Suburban Office
- Employment Institutional
- Suburban Residential
- Suburban Residential Optimized
- Rural Residential
- Rural Cluster
- Rural Mixed Use Village

Study Area Increase by 2030

Number of additional persons 11,419

Number of additional households 13,068

Number of additional jobs 3,485



**US Route 30 Master Plan: How the Scenarios Compare**

|   | Base       | Trend   | Urban Centers | Suburban Centers | Rural Centers |
|---|------------|---------|---------------|------------------|---------------|
| <b>Land Consumed</b>                                    |            |         |               |                  |               |
| Total acres developed                                   | 46,614     | 59,702  | 49,052        | 49,592           | 57,285        |
| Total additional acres developed                        | ---        | 13,088  | 2,438         | 2,978            | 10,671        |
| Percent of redevelopable land consumed                  | ---        | 25%     | 5%            | 6%               | 23%           |
| Percent of redevelopable land consumed                  | ---        | 4%      | 9%            | 1%               | 2%            |
| Percent of agricultural/open land consumed              | ---        | 15%     | 2%            | 3%               | 12%           |
| <b>Transportation</b>                                   |            |         |               |                  |               |
| Percent Change Base Year - Forecast Year                |            |         |               |                  |               |
| Daily traffic volume                                    | 5,700,000  | 12%     | 12%           | 14%              | 16%           |
| Daily vehicle miles traveled                            | 3,900,000  | 14%     | 13%           | 16%              | 20%           |
| Daily vehicle hours traveled                            | 105,000    | 12%     | 11%           | 13%              | 17%           |
| Commod level of service                                 | ---        | -1%     | -4%           | 0%               | -6%           |
| Daily minutes of vehicle travel per person              | 40         | 5%      | 3%            | 6%               | 9%            |
| Travel speed  | 36         | 2.0%    | 1.3%          | 2.4%             | 2.3%          |
| Annual gallons of gasoline consumed                     | 72,000,000 | 14%     | 13%           | 16%              | 20%           |
| Annual per capita dollars spent on gasoline****         | \$1,120    | 7%      | 5%            | 8%               | 12%           |
| <b>Land Use Urban Form</b>                              |            |         |               |                  |               |
| Percent Change Base Year - Forecast Year                |            |         |               |                  |               |
| New households in mixed-use, walkable communities       | ---        | 14%     | 99%           | 58%              | 30%           |
| New jobs in mixed-use, walkable communities             | ---        | 32%     | 100%          | 71%              | 33%           |
| New households in existing urban centers****            | ---        | 17%     | 61%           | 0%               | 0%            |
| New jobs in existing urban centers****                  | ---        | 40%     | 70%           | 0%               | 0%            |
| New households in existing water and sanitary districts | ---        | 36%     | 71%           | 20%              | 6%            |
| New jobs in existing water and sanitary districts       | ---        | 65%     | 78%           | 36%              | 20%           |
| <b>Population, Employment, and Land Area</b>            |            |         |               |                  |               |
| Land Area (all scenarios)                               |            |         |               |                  |               |
| Number of persons                                       | 158,662    | 170,081 | 11,419        | 11,419           | 7%            |
| Number of households                                    | 64,752     | 77,820  | 13,068        | 13,068           | 20%           |
| Number of jobs  | 100,854    | 104,339 | 3,485         | 3,485            | 3%            |
| Total acres   | 189,338    | ---     | ---           | ---              | ---           |
| Total unbuildable acres**                               | 88,529     | ---     | ---           | ---              | ---           |
| Total buildable acres**                                 | 100,810    | ---     | ---           | ---              | ---           |
| Buildable redevelopable acres***                        | 9,046      | ---     | ---           | ---              | ---           |
| Buildable agricultural or vacant/open acres             | 85,593     | ---     | ---           | ---              | ---           |

**Notes**

- \* Unbuildable or undevelopable land includes steep slopes, wetlands, water, primary road right-of-way, and existing residential areas
- \*\* Buildable land includes redevelopable areas, vacant/open space, and agricultural land
- \*\*\* Redevelopable land includes commercial and industrial areas (not residential areas)
- \*\*\*\* Assumes price of \$2.50 per gallon in current dollars for all scenarios
- \*\*\*\*\* Existing urban centers include Jeannette, Irwin, Greensburg, and Latrobe

