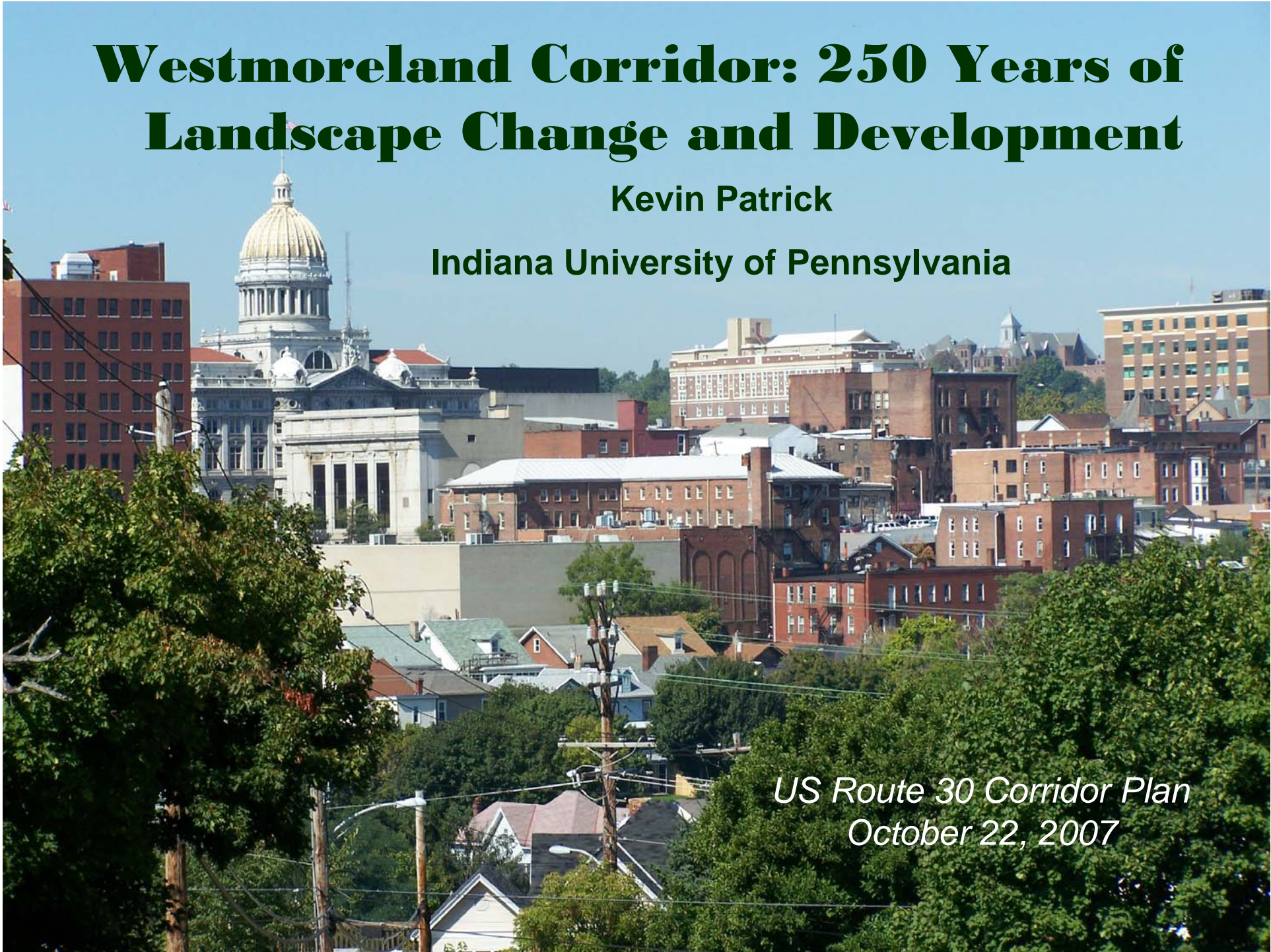


# **Westmoreland Corridor: 250 Years of Landscape Change and Development**

**Kevin Patrick**

**Indiana University of Pennsylvania**

*US Route 30 Corridor Plan  
October 22, 2007*





- 1. Overview of Westmoreland County Geography**
- 2. Westmoreland County Planning Challenges**
- 3. Understanding Heritage Landscapes in the Westmoreland Corridor**





# Overview of Westmoreland County Geography

## 1. Westmoreland as a Corridor County

Loyalhanna Gorge:

*Forbes Road (1758)*

*Philadelphia-Pittsburgh  
Turnpike (1818)*

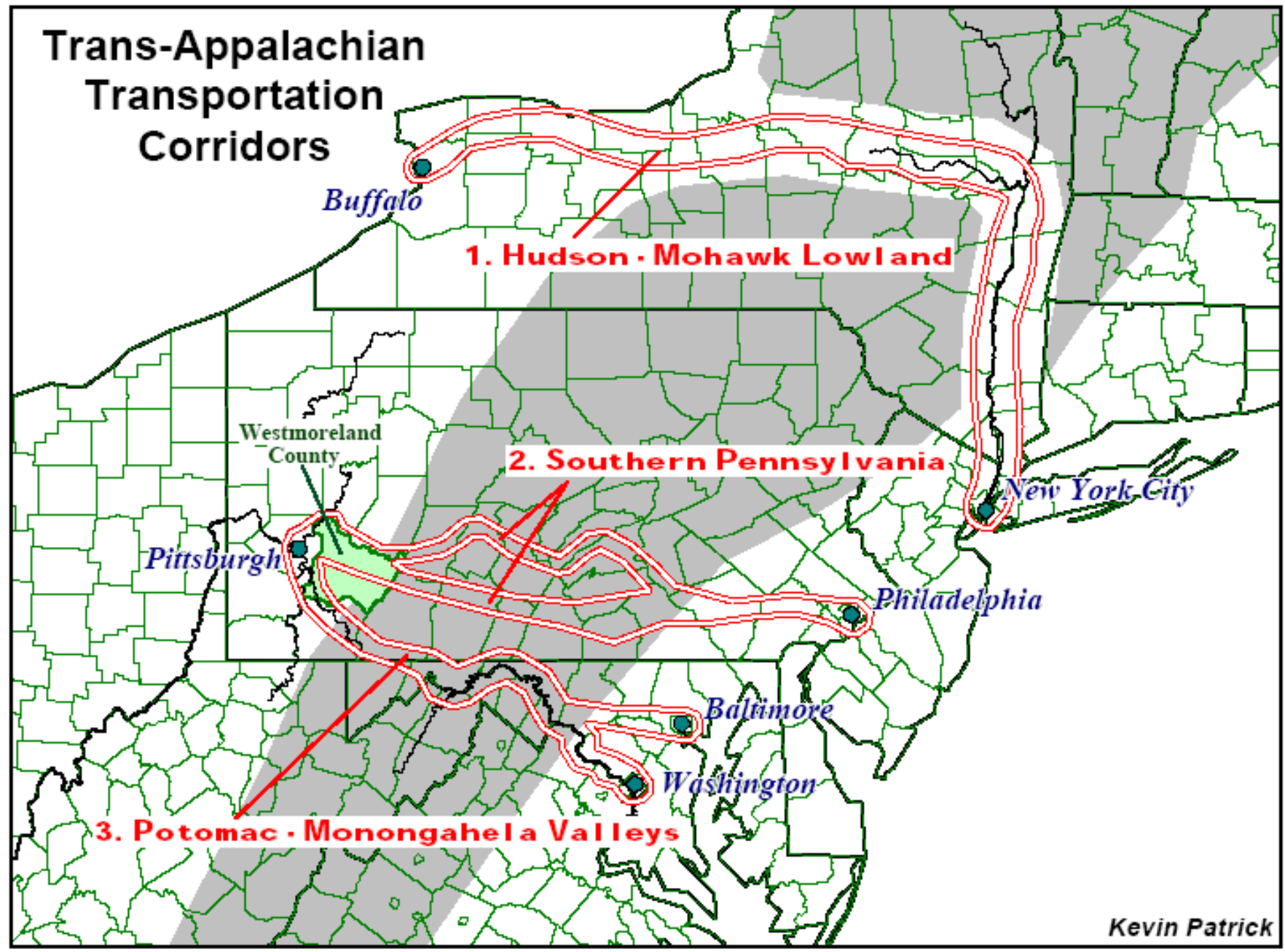
*Ligonier Valley Railroad (1878)*

*Lincoln Highway (1913)*

*US Route 30 (1925)*



# Trans-Appalachian Transportation Corridors



Kevin Patrick



Pack Saddle Gap, Blairsville, Pa.

**Low Grade Route for canals and railroads**





**More direct, steep mountain route for pack horses,  
wagons and autos**







BLUE MOUNTAIN

DO NOT CROSS CENTER LINE

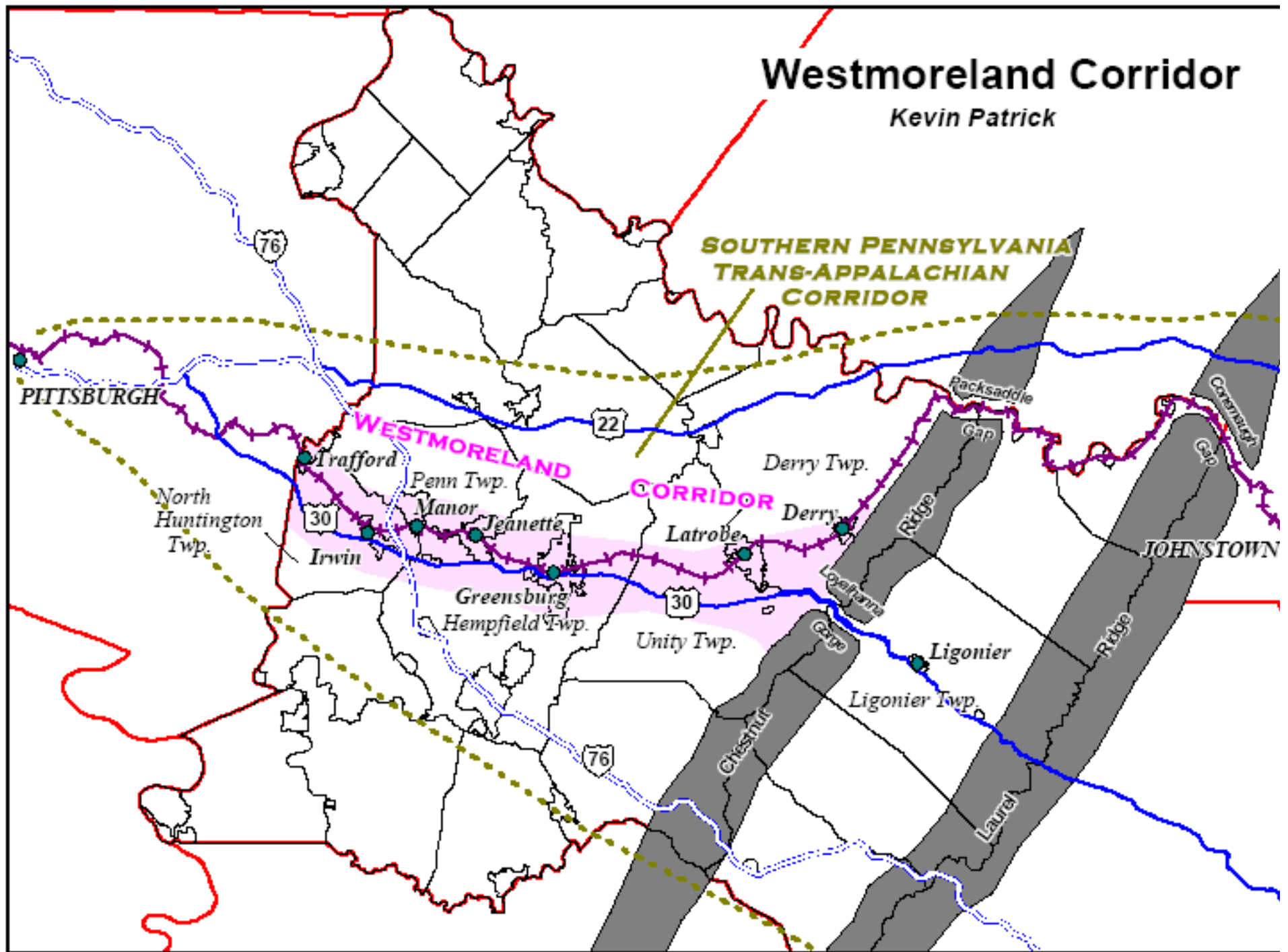
DO NOT CROSS CENTER LINE



# Westmoreland Corridor

Kevin Patrick

**SOUTHERN PENNSYLVANIA  
TRANS-APPALACHIAN  
CORRIDOR**





**Adams Mine, Irwin, PA**

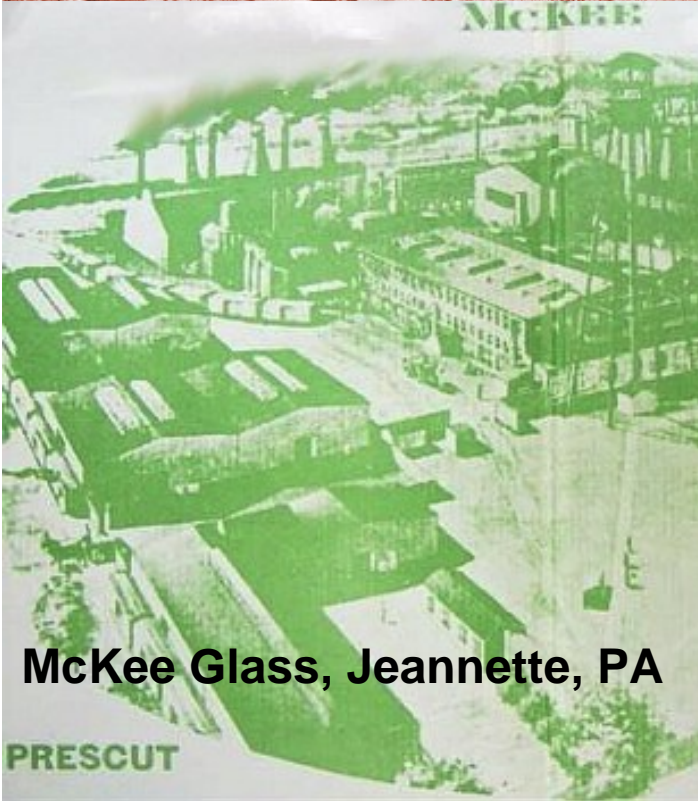


# Industrialization of the Westmoreland Corridor

**Latrobe Steel, Latrobe, PA**



**McKee Glass, Jeannette, PA**





# Rail-oriented Development





# Industrial Satellite Cities

*Jeannette*

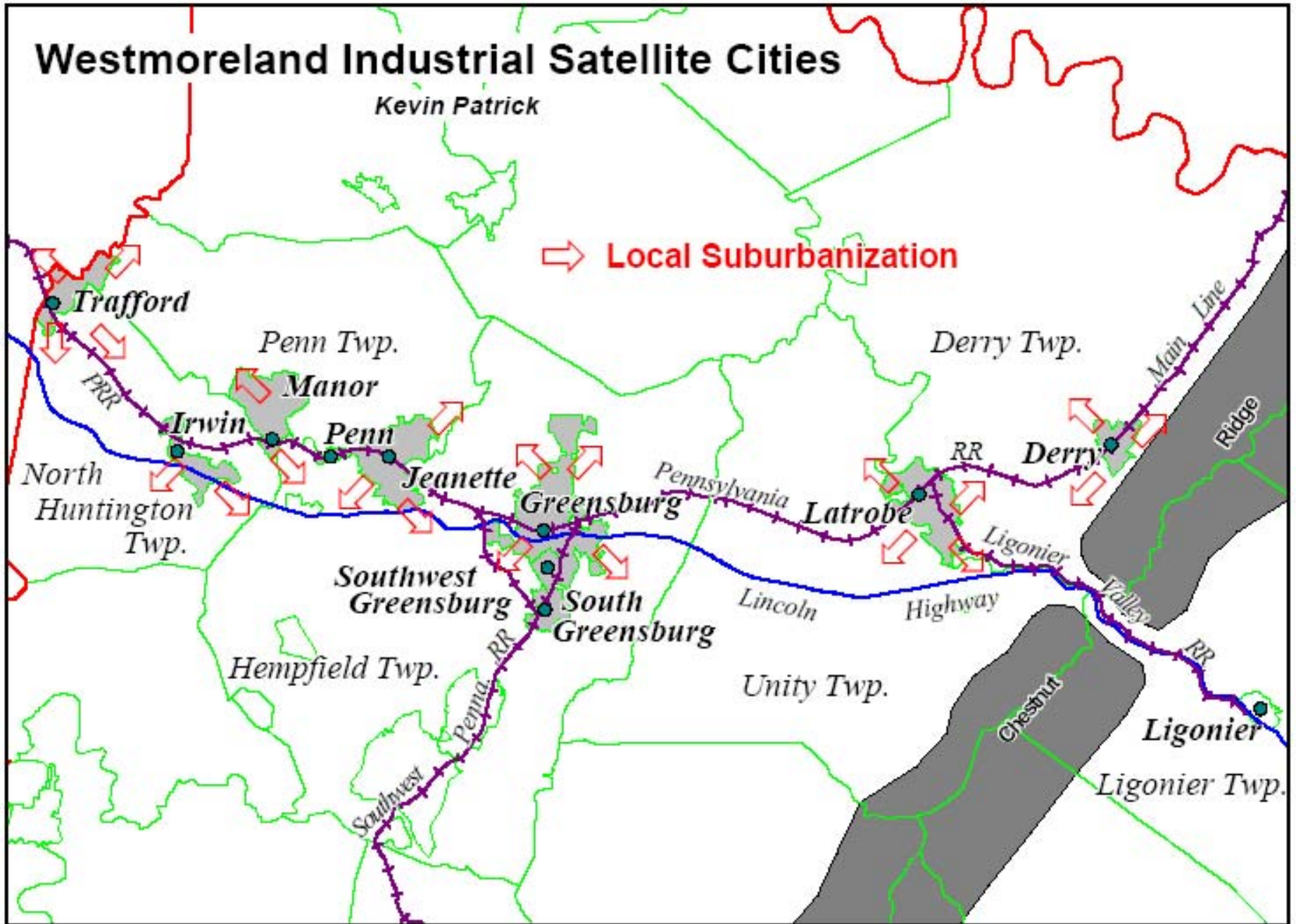




# Westmoreland Industrial Satellite Cities

Kevin Patrick

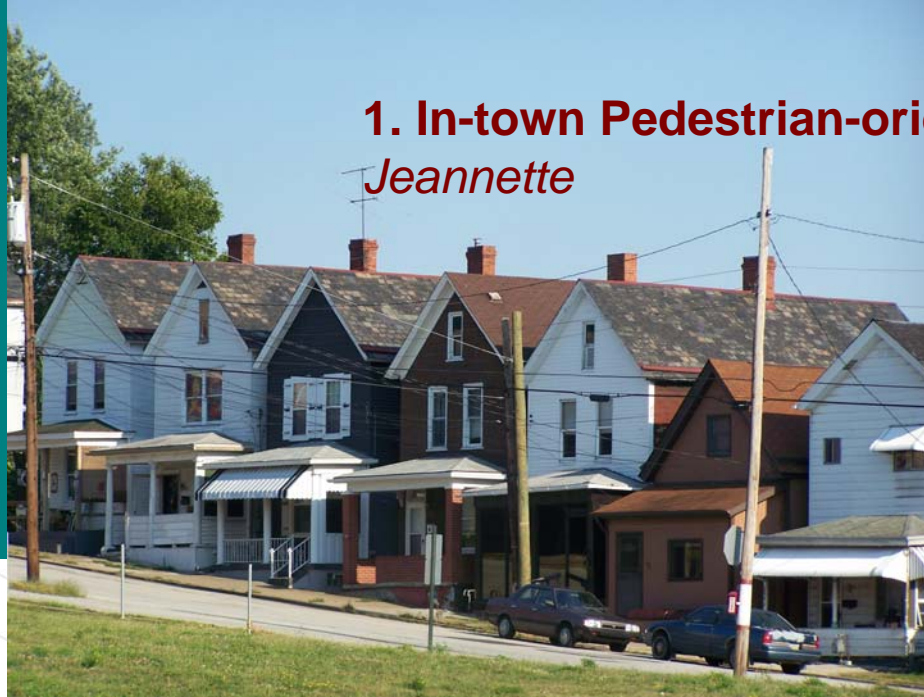
⇒ Local Suburbanization





**Local  
Suburbanization  
in the  
Westmoreland  
Corridor**

**1. In-town Pedestrian-oriented housing**  
*Jeannette*



**2. Early-Auto Bungalow Zone**  
*Derry*

**3. Postwar Ranch Plan**  
*Latrobe*





## **2. Westmoreland as a Suburban Straddle County**



*Rural Ligonier Valley*

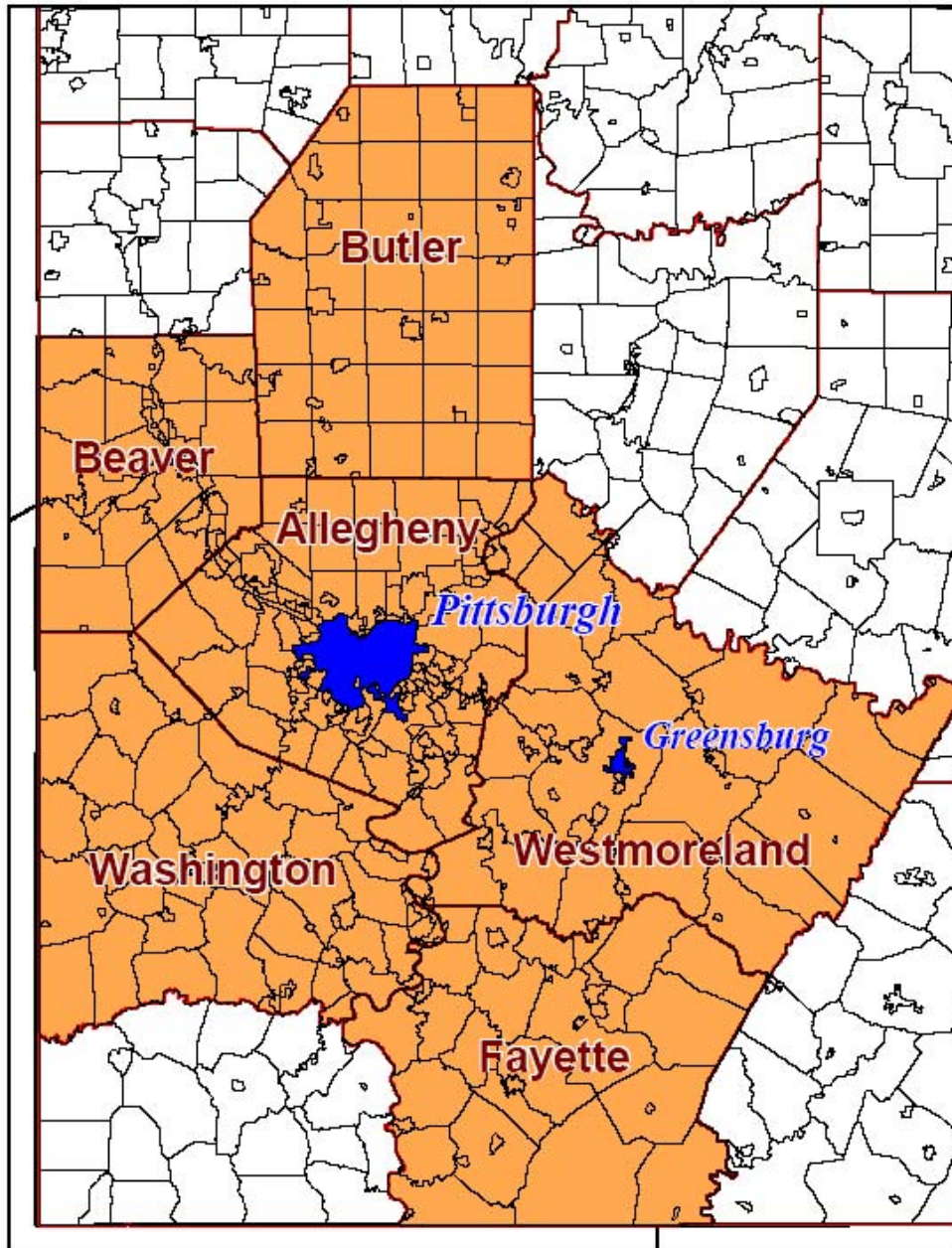


## 2. Westmoreland as a Suburban Straddle County



*Suburban North Huntingdon Twp.*



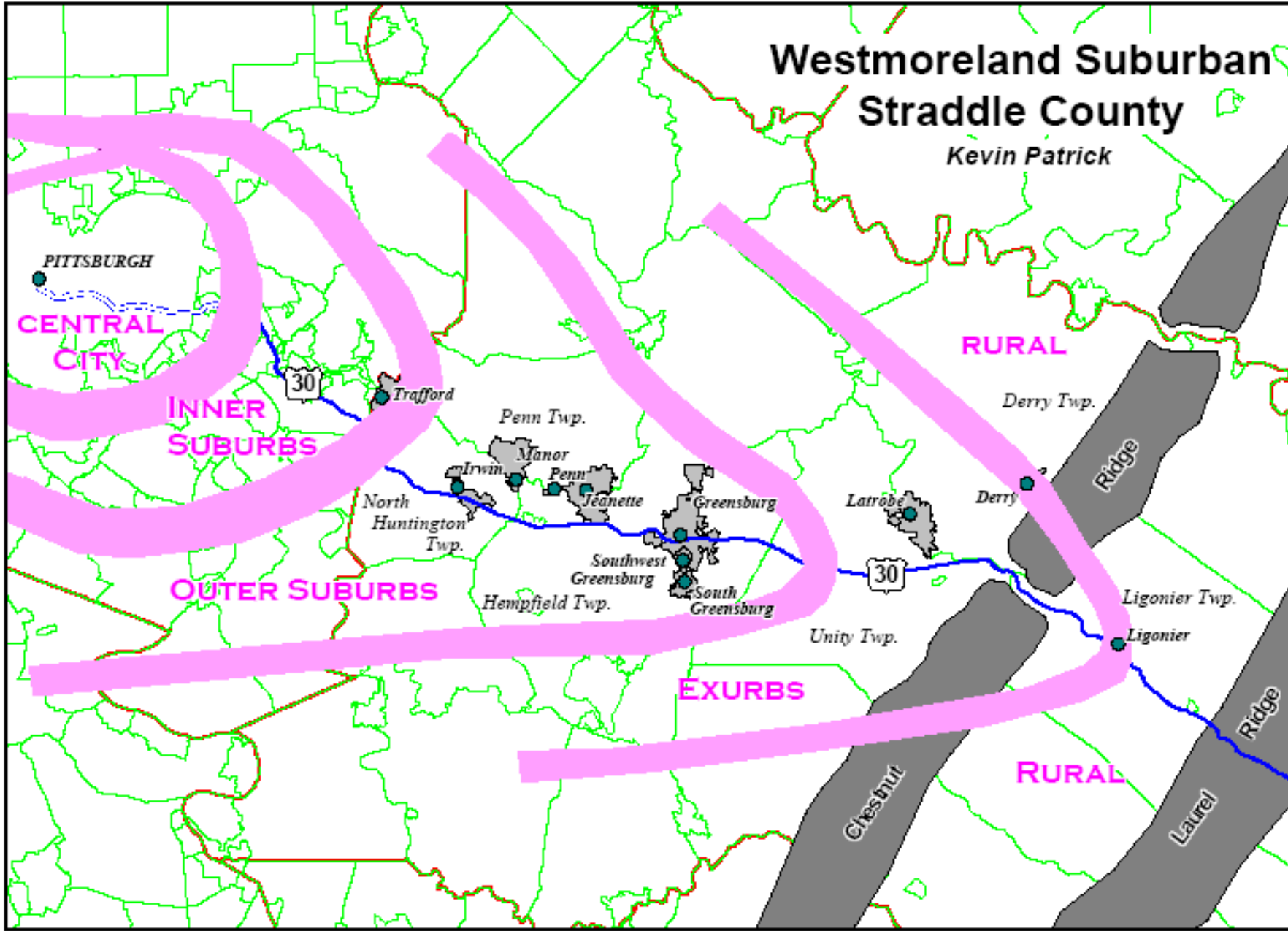


# Pittsburgh Metropolitan Statistical Area



# Westmoreland Suburban Straddle County

Kevin Patrick





| <b>Borough Percent Population Change</b> | <b>1900-1940</b> | <b>1940-2000</b> |
|--|------------------|------------------|
| Trafford                                 | 24               | -17              |
| Irwin                                    | 40               | 27               |
| North Irwin                              | 186              | -24              |
| Manor                                    | 88               | 117              |
| Penn                                     | 42               | -57              |
| Adamsburg                                | 14               | 5                |
| Jeannette                                | 177              | -34              |
| Greensburg                               | 157              | -5               |
| South Greensburg                         | 274              | -13              |
| Southwest Greensburg                     | 261              | -20              |
| Latrobe                                  | 141              | -19              |
| Youngstown                               | 72               | -27              |
| Derry                                    | 28               | 0                |
| Ligonier                                 | 69               | -20              |

| <b>Township Percent Population Change</b> | <b>1900-1940</b> | <b>1940-2000</b> |
|---|------------------|------------------|
| North Huntingdon Twp.                     | 30               | 202              |
| Penn Twp.                                 | 14               | 222              |
| Hempfield Twp.                            | 123              | 97               |
| Unity Twp.                                | 12               | 92               |
| Derry Twp.                                | 49               | 4                |
| Ligonier Twp.                             | 52               | 57               |



**Deindustrialization  
In the  
Westmoreland Corridor**

*Industrial Ceramics, 1995  
(Westinghouse), Derry*



*Jeannette Corporation, 1983  
(McKee-Jeannette Glass),  
Jeannette*





# In-town Heritage Landscapes

## *Sense of Permanence*



*Downtown Greensburg*



*Jeannette*



# Banks and Business Blocks

*Greensburg*

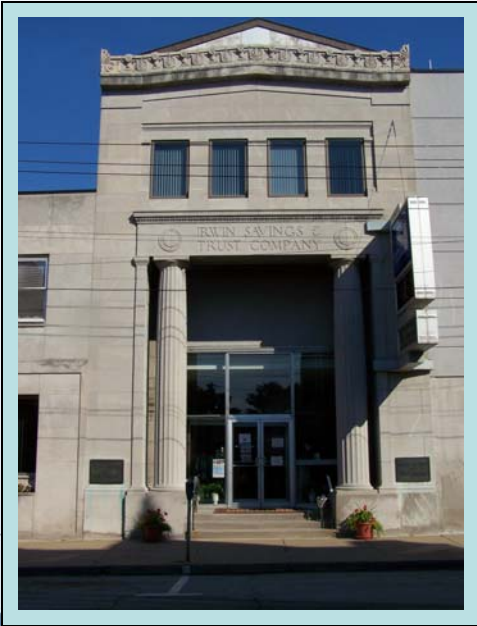


*Latrobe*





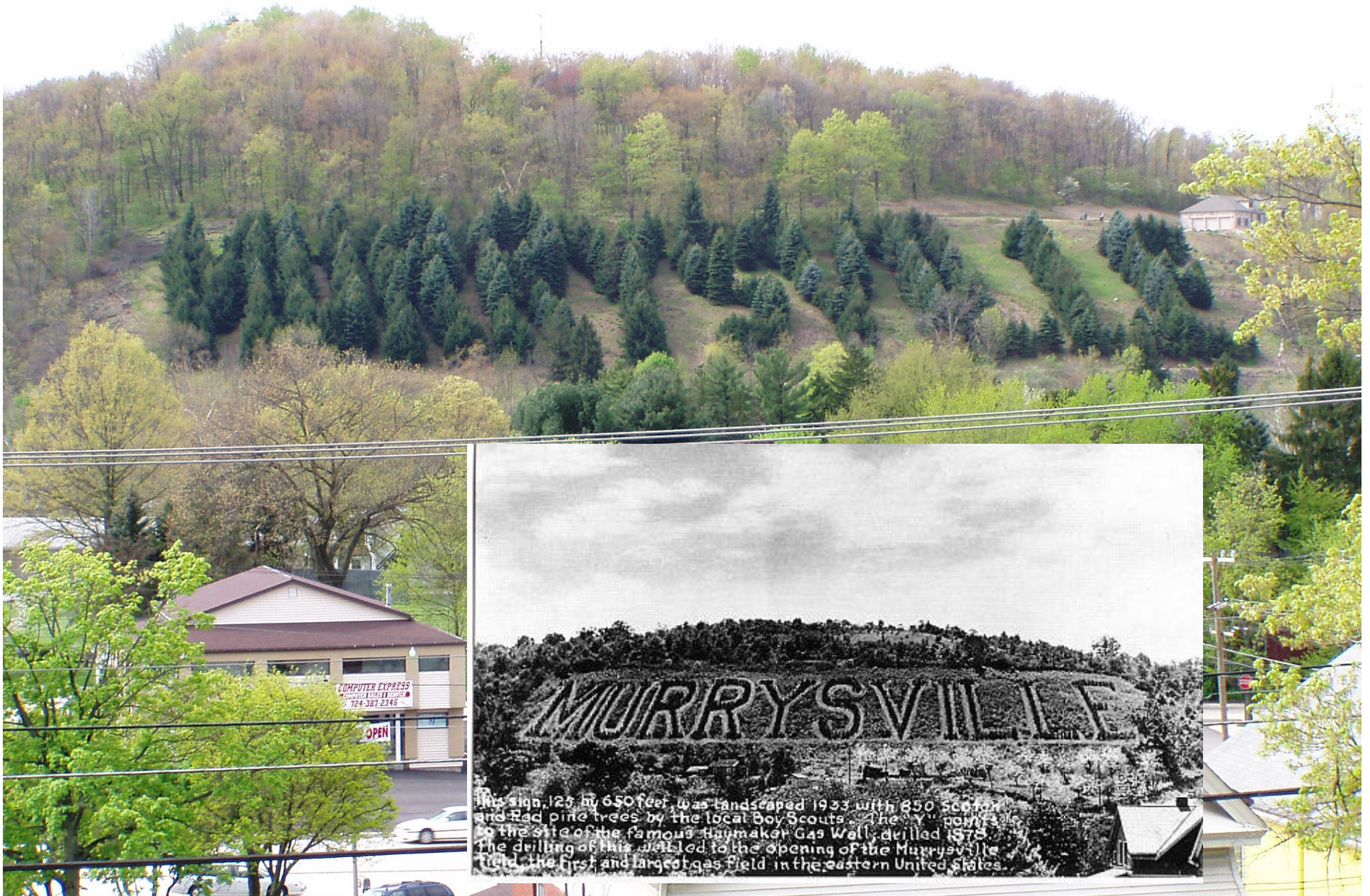
*Irwin*



*Derry*



# Murrysville Tree Sign, 1933







**Building  
Dates and  
Names**



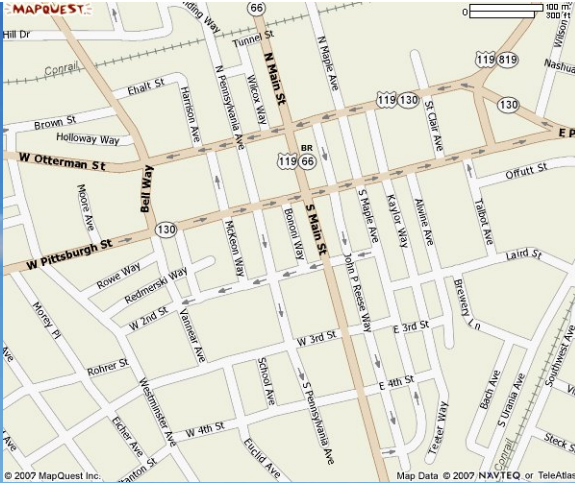






**Commercial Strip  
Built to Bulldoze**





*Downtown  
Greensburg*

*Westmoreland  
Mall*



**Westmoreland Mall's Auto-Oriented Footprint  
Consumption and Landscape**



**Landscape  
Building**



*Troutmans Department Store  
Downtown Greensburg*



# Receptacles of Consumption

~~Greengate Mall~~  
Greengate Centre





# Short-term Capitalism, Billboards and Local Control





# Rural Heritage Landscapes



*Unity Township*





# Foxfield Knoll

**CUSTOM HOME PACKAGES START \$300,000**



APPROVED BUILDERS:  
BUILDING VISIONS • INSELMINI CONST. • JAS CONST. • BARRY O'BLOCK BUILDERS • R.A. SNOZNIK CONST.

**SCALISE**  
REAL ESTATE COMPANY, INC.

**Dena Scalise**  
PLAN COORDINATOR  
**724-953-5002**









*Unity Township*



# Westmoreland County Planning Challenges

## 1. Manage Growth to Mitigating Suburban Sprawl





# Westmoreland County Planning Challenges

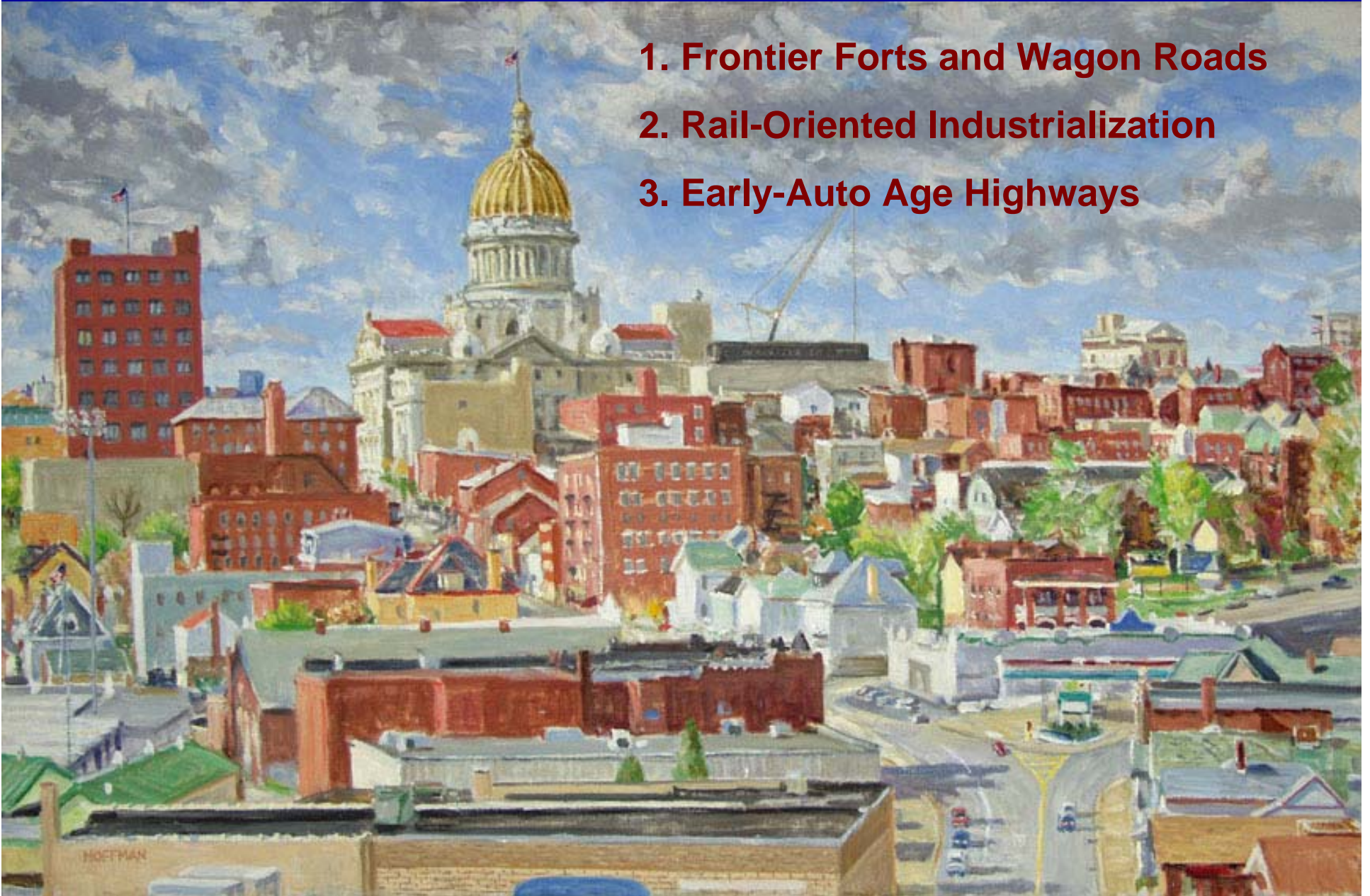
## 2. Stimulate Growth to Revitalize Downtowns





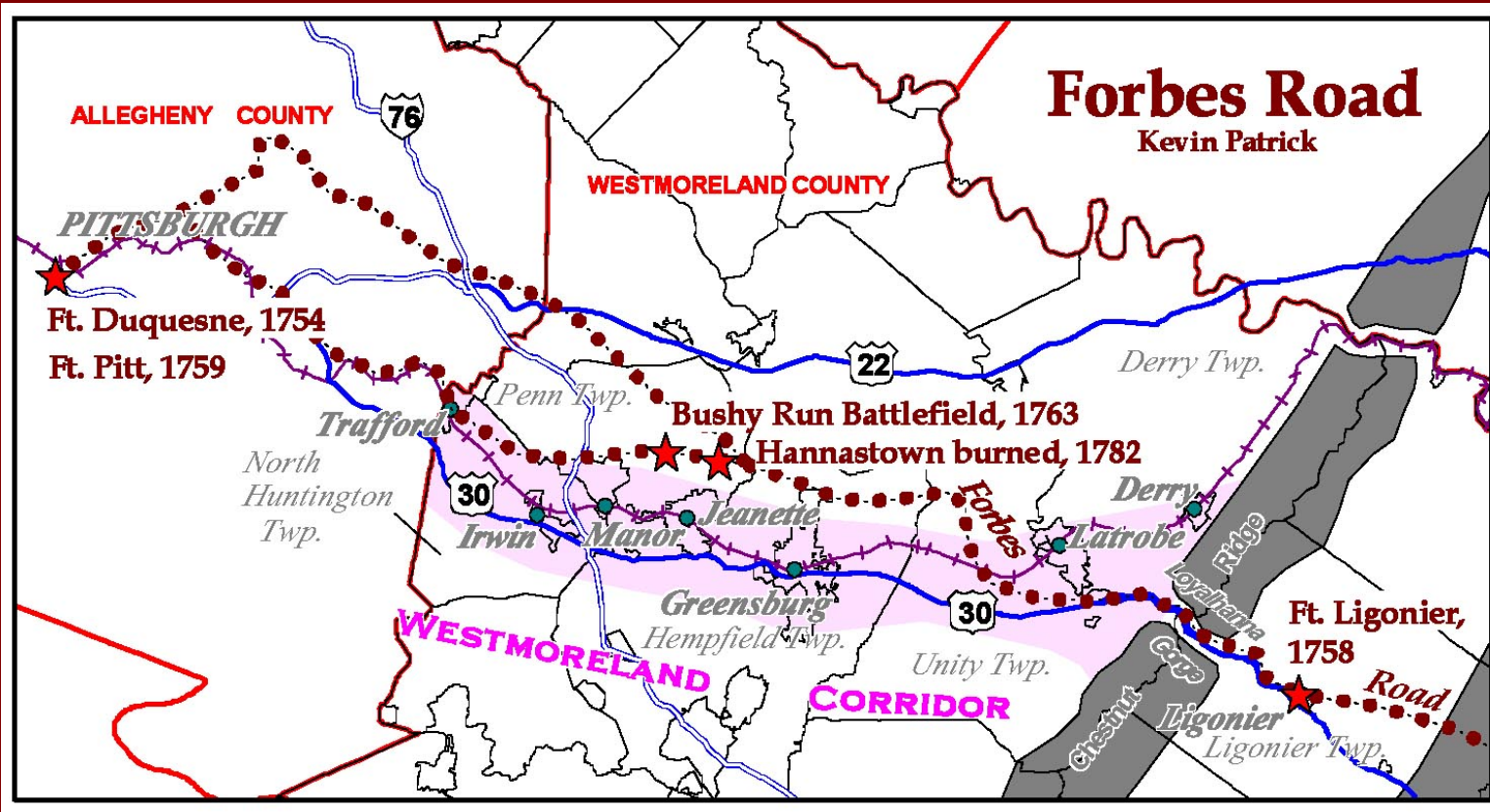
# Understanding Heritage Landscapes in the Westmoreland Corridor

1. Frontier Forts and Wagon Roads
2. Rail-Oriented Industrialization
3. Early-Auto Age Highways





# 1. Frontier Forts and Wagon Roads



**Forbes Road**  
1758-1782

*Ft. Ligonier,*  
1758/1958





**Hanna's Town Reconstruction**





## BUSHY RUN BATTLEFIELD



British and Americans under  
Col. Henry Bouquet defeated the  
Indians here, August 5-6, 1763,  
during the Pontiac War, and  
lifted the siege of Ft. Pitt.

PENNSYLVANIA HISTORICAL AND MUSEUM COMMISSION







## 2. Rail-Oriented Industrialization



*Railroad Heritage  
Park, Derry*



*Greensburg*



*Latrobe*

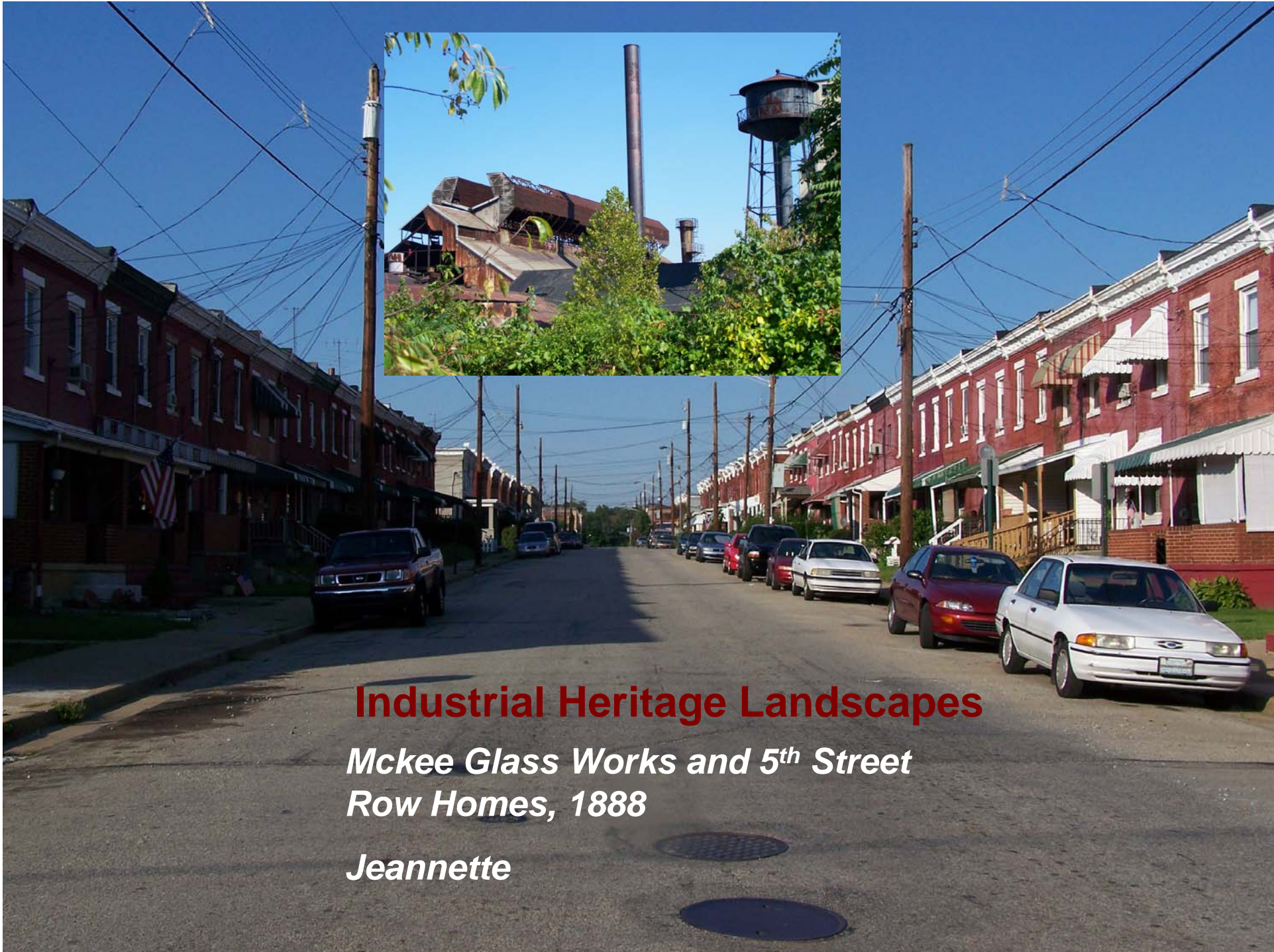


*Ligonier*



**Railroad Heritage Landscapes**





## **Industrial Heritage Landscapes**

*Mckee Glass Works and 5<sup>th</sup> Street  
Row Homes, 1888*

*Jeannette*



**Ft. Pitt Brewery**

*Jeannette*







## Downtown Heritage Landscapes







***North Jeannette***



***Ridgeview Park***

**Neighborhood Heritage Landscapes**



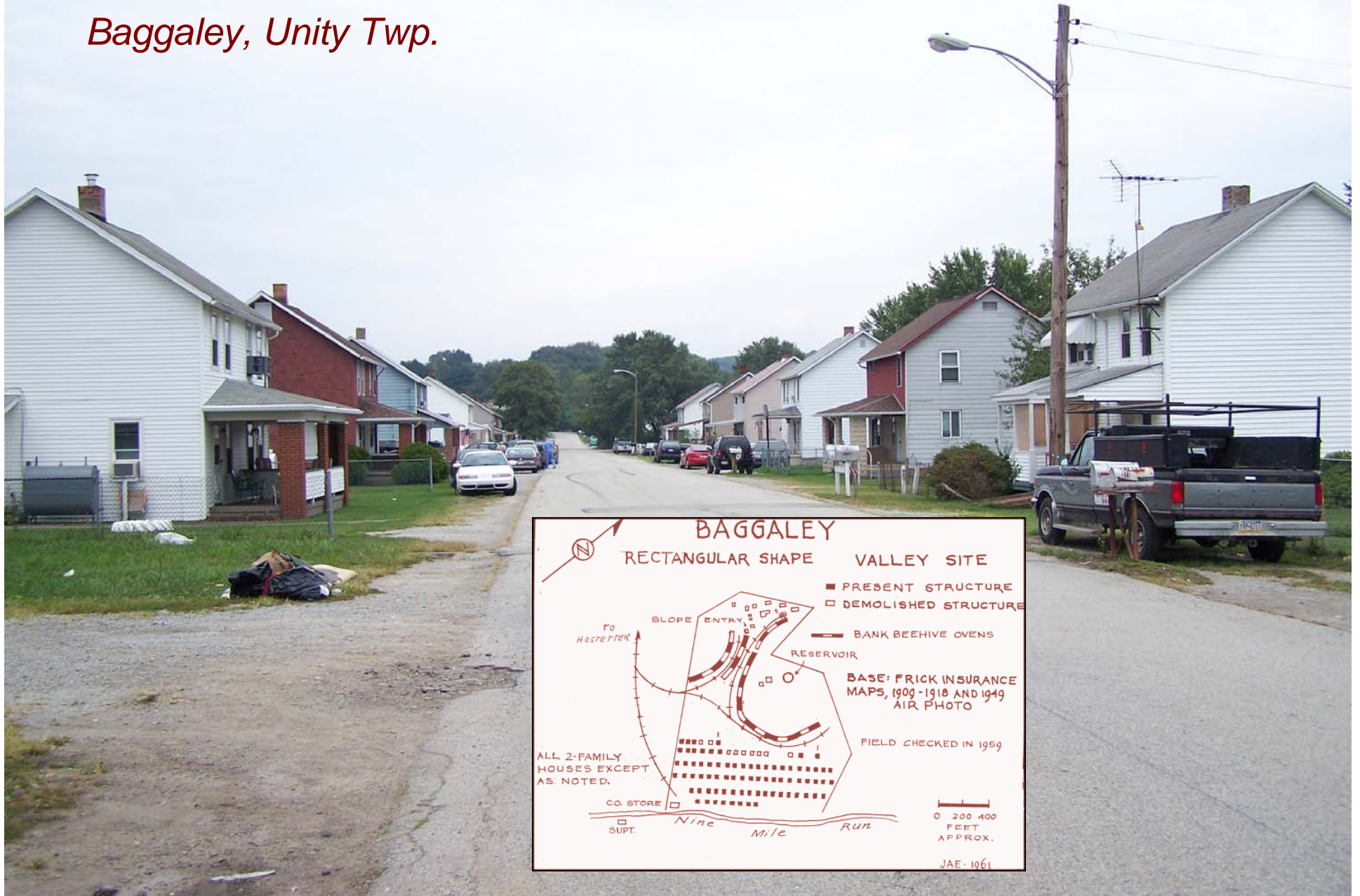
***Academy Hill, Greensburg***





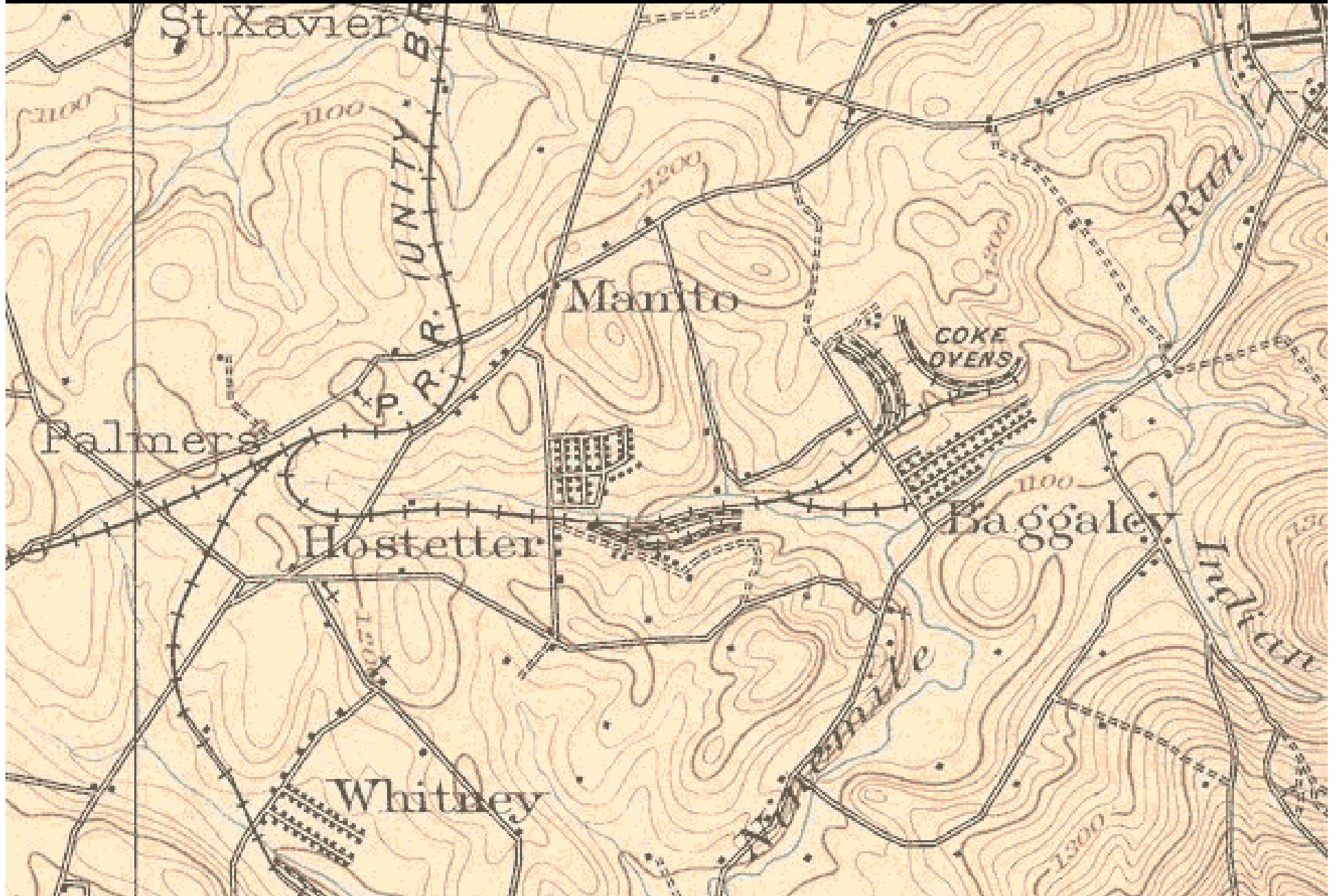
# Westmoreland Coal Patch Heritage Landscapes

*Baggaley, Unity Twp.*





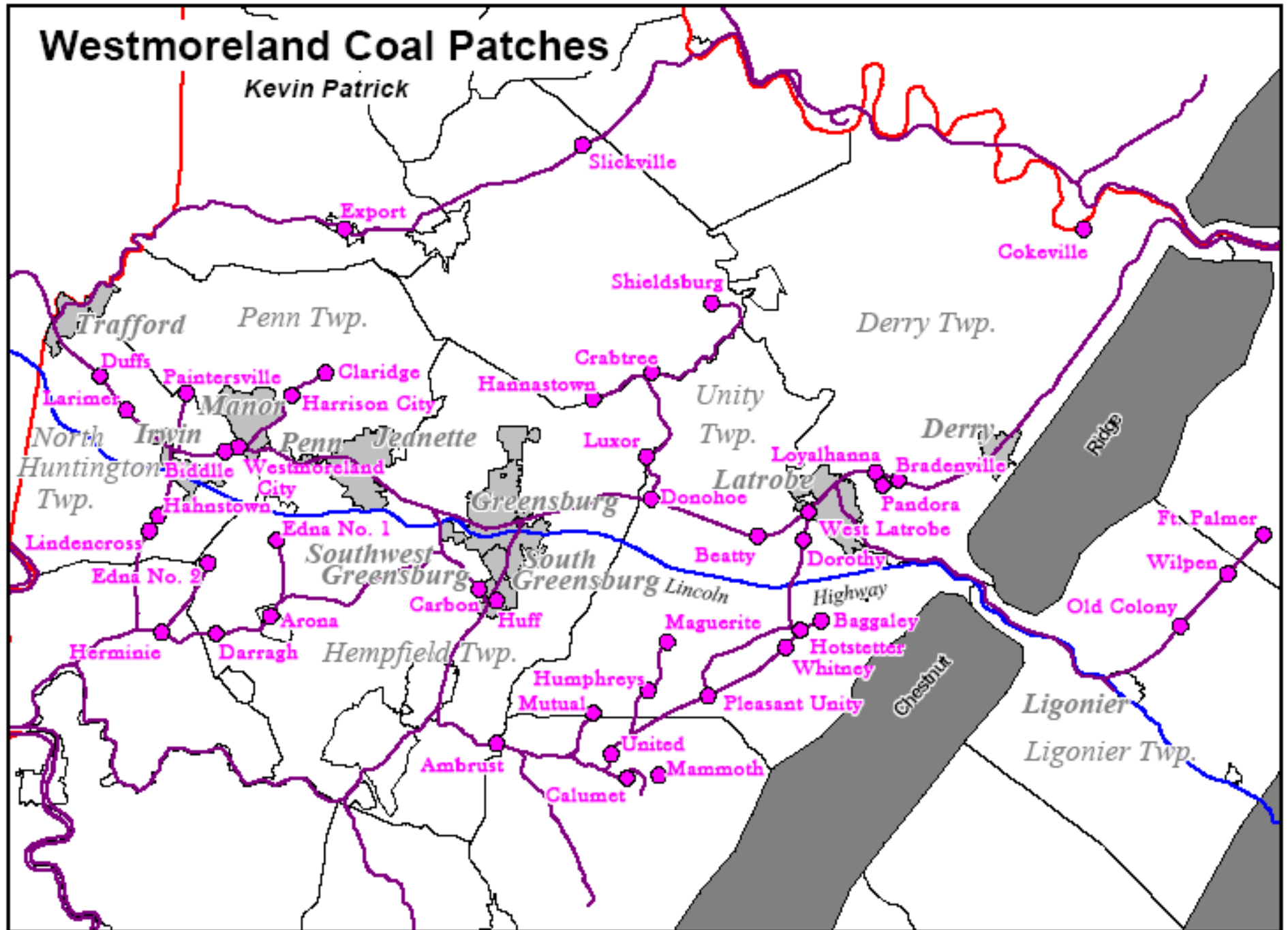
# PRR Unity Branch Coal Patches, USGS 1:62,500, 1902





# Westmoreland Coal Patches

Kevin Patrick







**Saltbox Company Houses**  
*Loyalhanna*



**Coke Ovens**  
*Luxor*

**Coal Patch Clustered Development**



**Company Store**  
*Baggaley*



*Whitney*





**WEST PENN SYSTEM  
RAILWAY LINES**

STATE OF PENNSYLVANIA





### 3. Early-Auto Age Highways

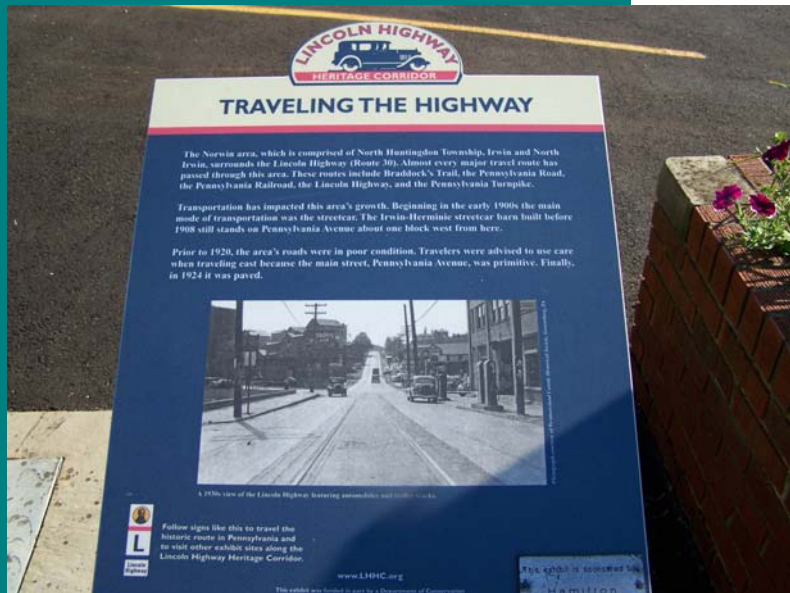
*Lincoln Highway Heritage Corridor*



*1928 Lincoln Highway marker*



# Lincoln Highway Heritage Corridor Exhibits





# Lincoln Highway Remnant

*Unity Township*



**Lincoln Highway showroom**  
*Greensburg*



# LHHC's Ridgeway Inn Visitor Center

*Ligonier Twp.*



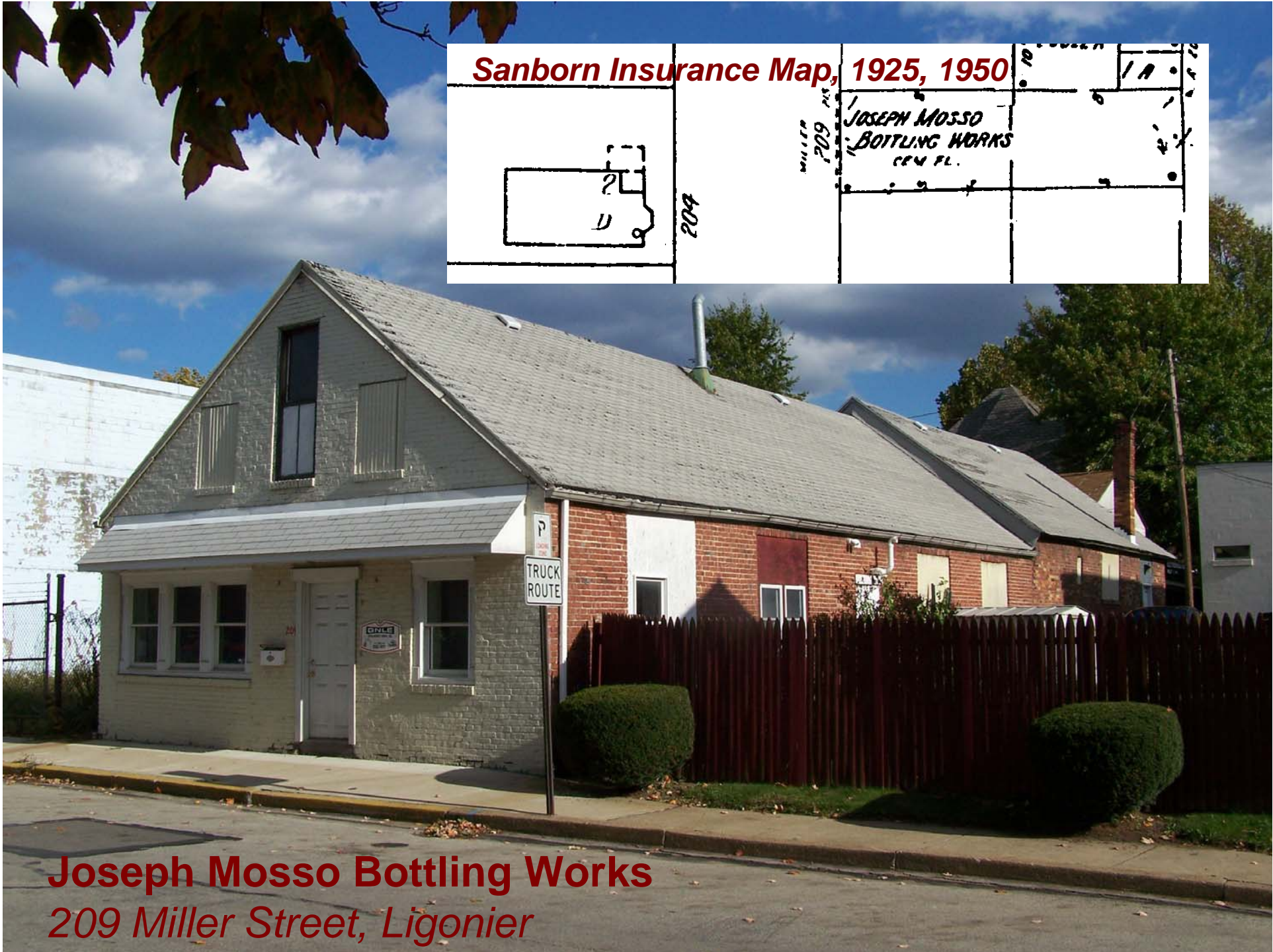
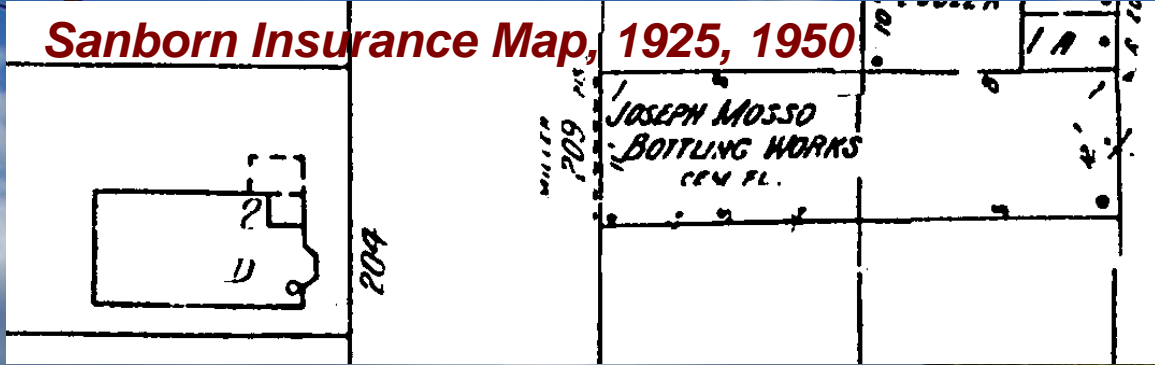




Lincoln Highway Remnant  
*Ligonier Twp.*



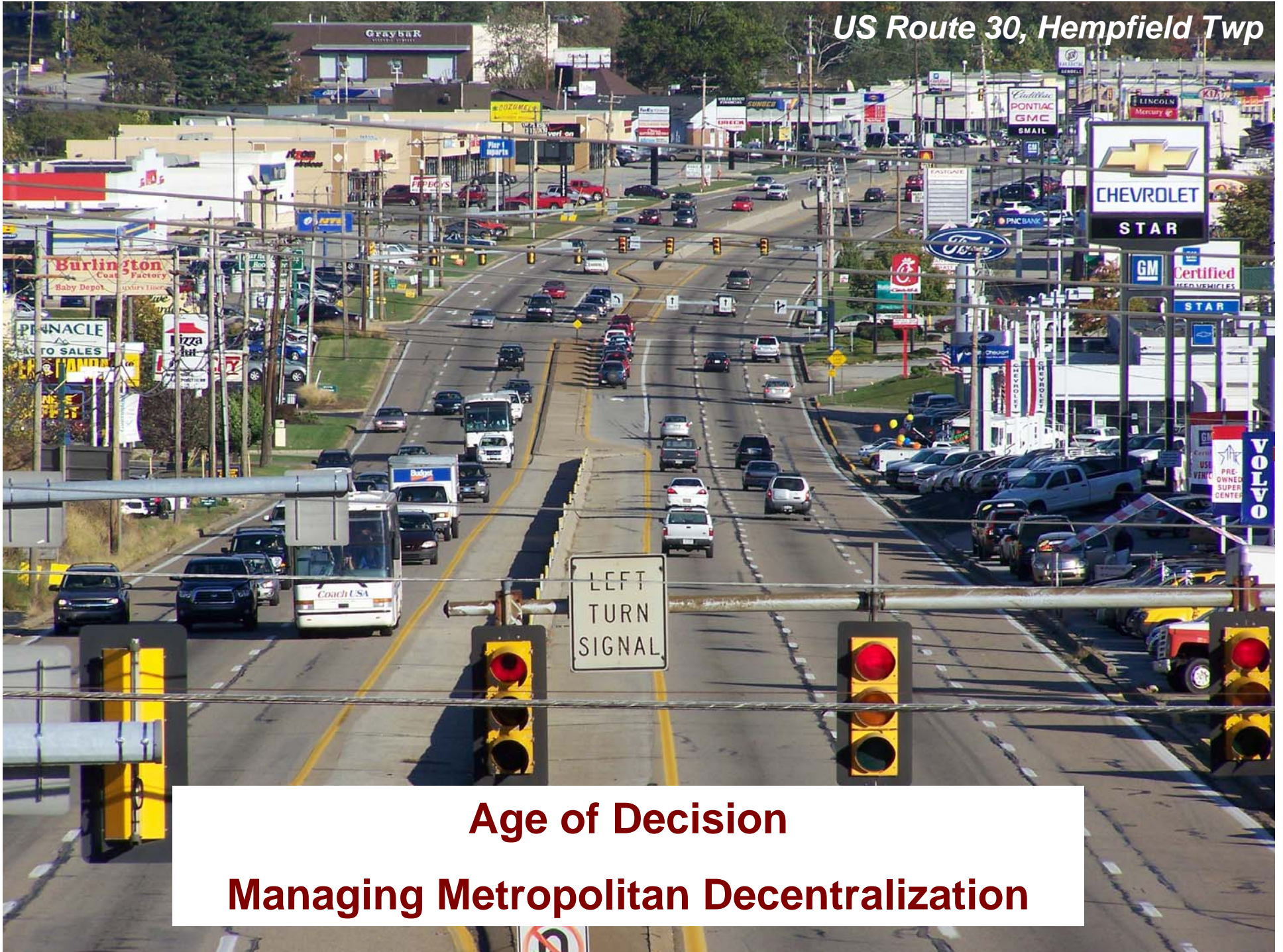




**Joseph Mosso Bottling Works**  
*209 Miller Street, Ligonier*



*US Route 30, Hempfield Twp*



**Age of Decision**  
**Managing Metropolitan Decentralization**