



Legend



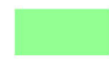
1A-Minor traffic signal improvements
Source: Congested Corridor Improvement Program



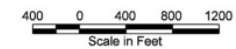
1B-Modify westbound right turn movement at Leger Road to be truck accessible
Source: N. Huntingdon Twp Comprehensive Plan



1C-Provide landscaped median with left turn storage bays, curb, and driveway consolidation where feasible
Source: N. Huntingdon Twp Comprehensive Plan & SPC Long Range Plan




1D-Convert center turn lane to landscaped median with left turn storage bays (in conjunction with Option 1C)
Source: N. Huntingdon Twp Comprehensive Plan & SPC Long Range Plan

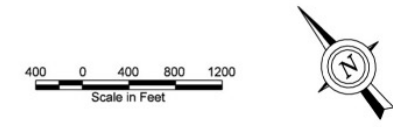


US ROUTE 30 MASTER PLAN

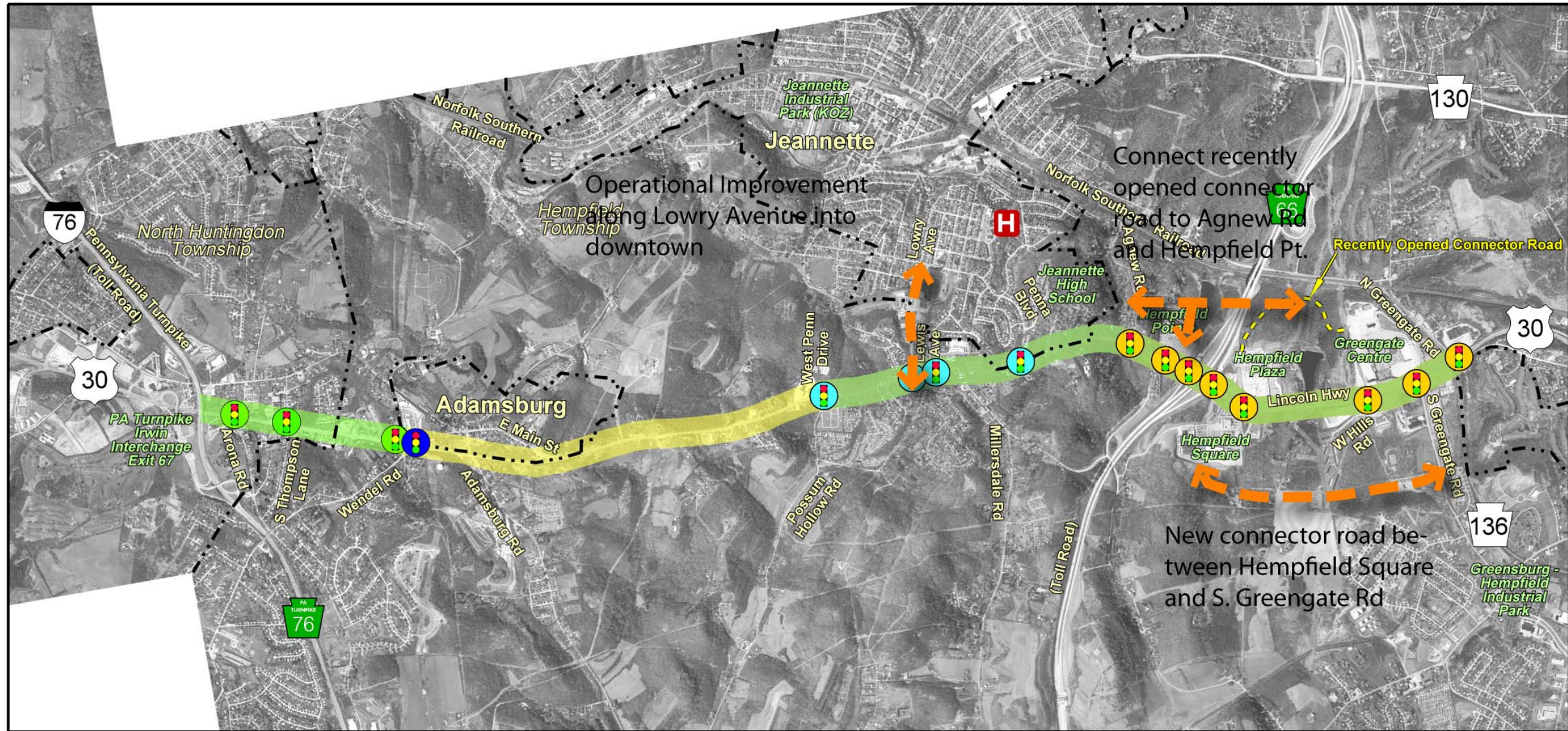





Legend



-  2A-Coordinate traffic signals
Source: Congested Corridor Improvement Plan

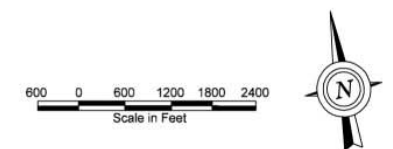


US ROUTE 30 MASTER PLAN

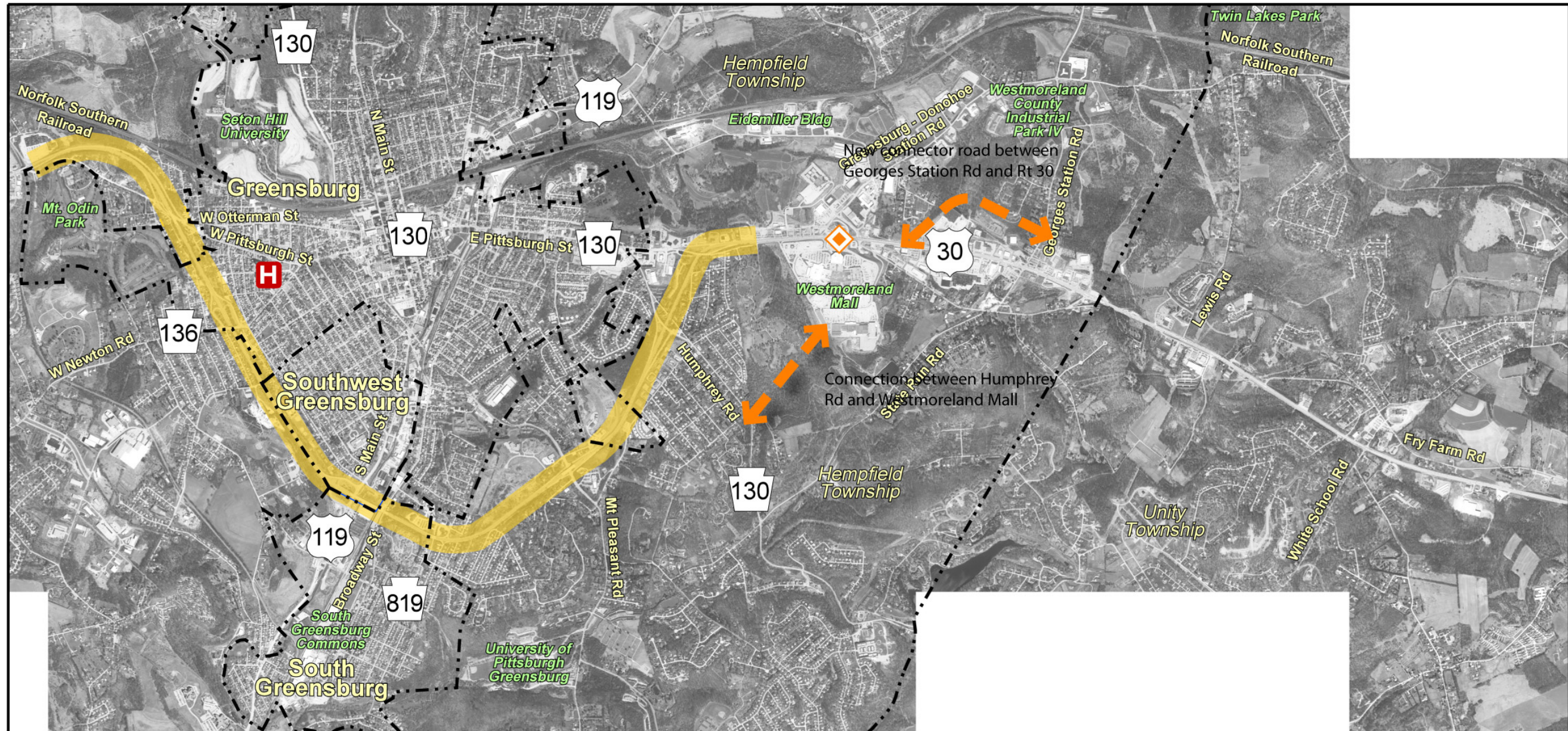


- Legend**
- 
 3A- Install traffic signal
 Source: PennDOT SR 30 Long Range Transportation Plan
 - 
 3B- Coordinate traffic signals, widen to provide additional turning lanes at intersections and provide landscaped median with left turn storage bays, curb and driveway consolidation where feasible
 Source: PennDOT SR 30 Long Range Transportation Plan
 - 
 3C- Remove barrier and widen to provide access to adjacent business and homes via landscaped median with left turn storage bays, curb, and driveway consolidation (in conjunction with Options 3B, 3D, & 3E)
 Source: Project Team (to be consistent with PennDOT SR 30 Long Range Transportation Plan)



- 
 3D- Coordinate traffic signals, widen to provide additional turning lanes at intersections, and widen to provide landscaped median with left turn storage bays, curb, and driveway consolidation where feasible
 Source: PennDOT SR 30 Long Range Transportation Plan
- 
 3E- Coordinate traffic signals, widen to provide additional turning lanes at intersections, provide landscaped median with left turn storage bays, curb and driveway consolidation
 Source: PennDOT SR 30 Long Range Transportation Plan & SPC Transportation Improvement Program

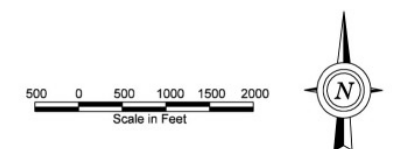


US ROUTE 30 MASTER PLAN



Legend

- 
 4A-Improve ramp merges and diverges along limited access portions of Route 30
 Source: Greensburg, South Greensburg, Southwest Greensburg & Hempfield Plan
- 
 4B-Improve Donohoe Rd / Westmoreland Mall area operations
 Source: Greensburg, South Greensburg, Southwest Greensburg & Hempfield Plan



US ROUTE 30 MASTER PLAN



Legend



5A- Provide additional turn lanes at Route 30 and PA 981 intersection
 Source: PennDOT Unity Twp Traffic Analysis Study & SPC Transportation Improvement Plan



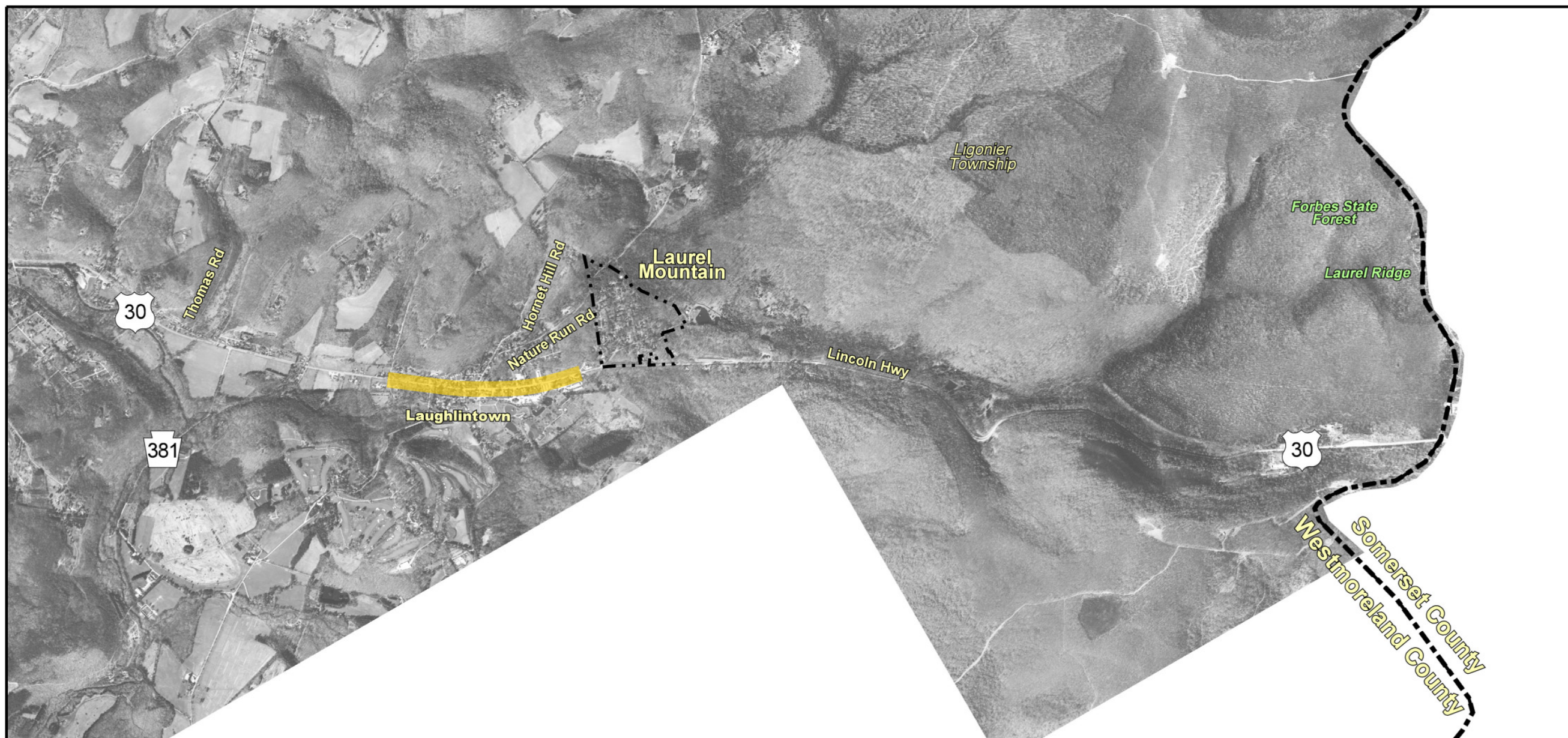
5B- Provide additional eastbound and westbound through lanes
 Source: PennDOT Unity Twp Traffic Analysis Study & SPC Transportation Improvement Plan



5C- Install traffic signal for eastbound movement at PA 217
 Source: PennDOT Unity Twp Traffic Analysis Study

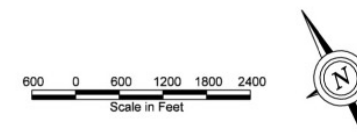


US ROUTE 30 MASTER PLAN



Legend

- 7A- Safety / pedestrian improvements through Laughlinton
- Source: US Route 30 Master Plan Project Working Group



US ROUTE 30 MASTER PLAN